

City of California City

Draft Maps
March 25, 2025



Agenda

Things we will cover:

- Traditional Districting/Redistricting Principles
- Public Testimony
- Draft Maps
- Public Hearing Schedule

Required Districting Criteria

Traditional redistricting principles used throughout the country and written into state law

There are a number of criteria that are required under the FAIR MAPS Act (ranked):

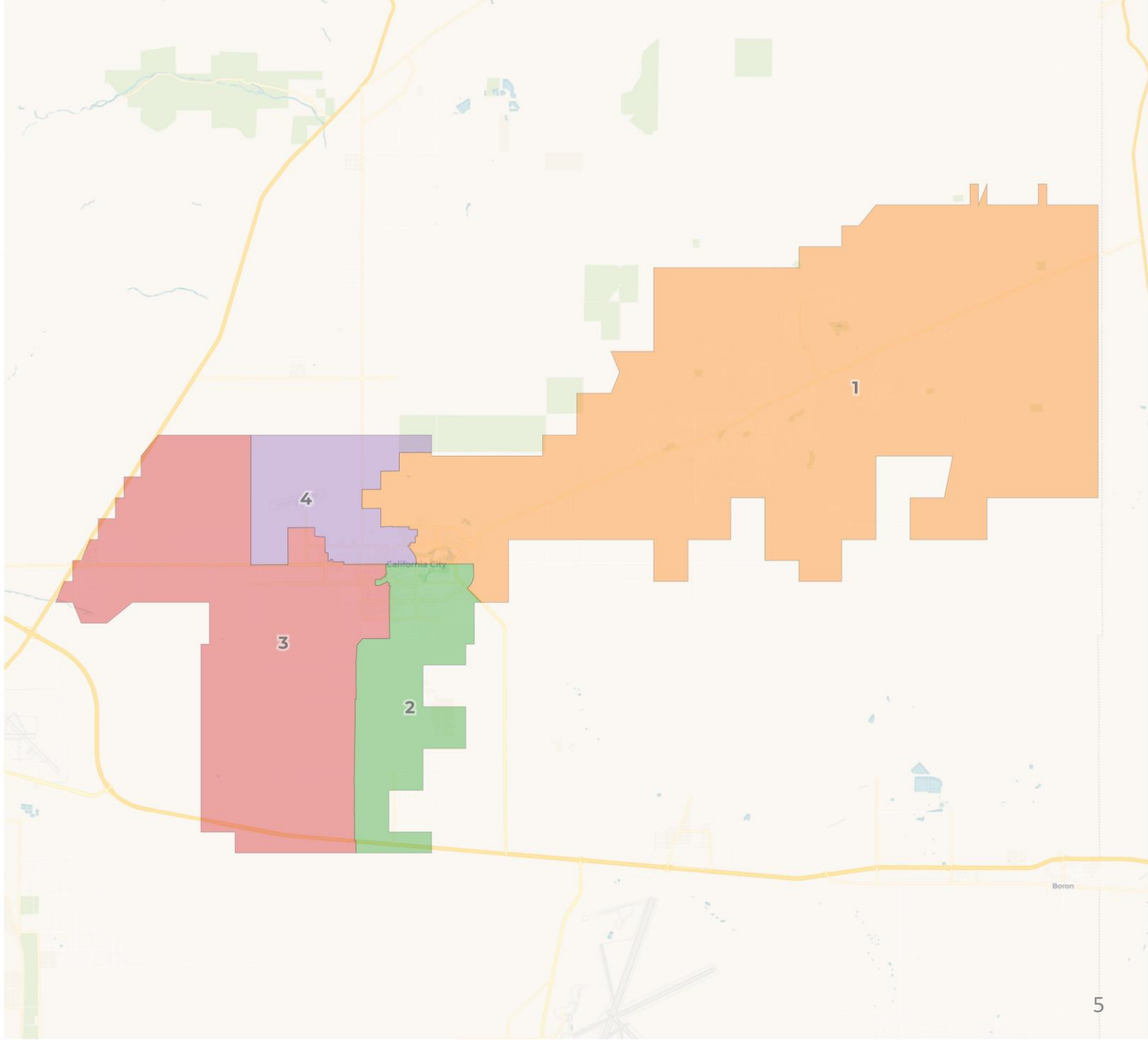
- Relatively equal size - people, not citizens
- Contiguous – districts should not hop/jump
- Maintain “*communities of interest*”
- Easily identifiable and understandable lines, following natural and man-made boundaries
- Keep districts compact – appearance/function

Submitted Testimony

Maps submitted by the public

Four maps were submitted by members of the public by the March 18th deadline. Any maps submitted after that date will be discussed at the next public meeting.

These maps influenced Draft Maps A-C.

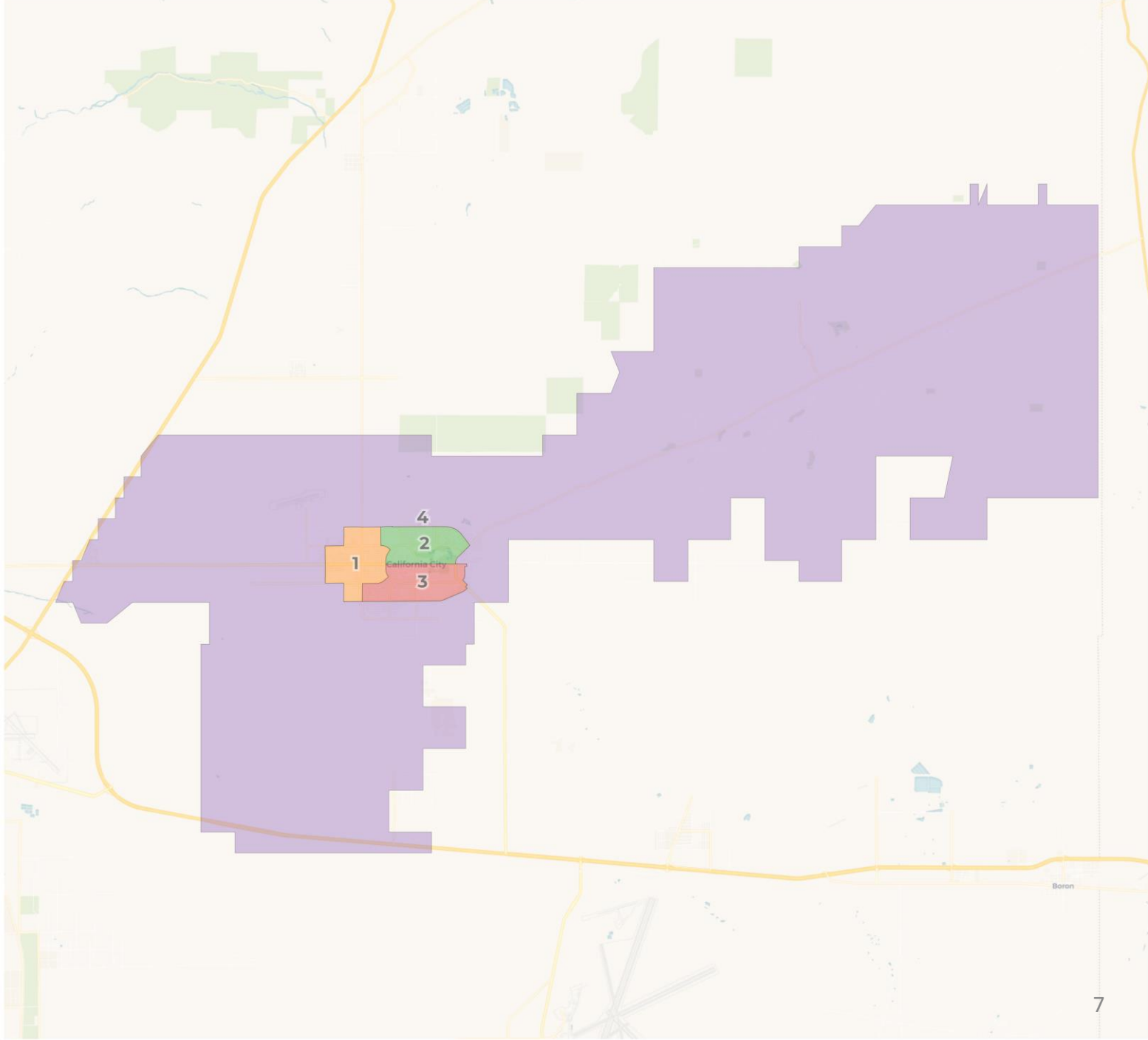


2020 Census

	1	2	3	4
Population	3,229	3,221	3,237	3,236
Deviation	-2	-10	6	5
Deviation %	-0.1%	-0.3%	0.2%	0.2%
Other	1,426	1,434	1,382	1,219
Other %	44.2%	Total Deviation: 0.5%		37.7%
Latino	987	1,094	1,082	1,060
Latino %	30.6%	34.0%	33.4%	32.8%
Asian	83	106	76	84
Asian %	2.6%	3.3%	2.3%	2.6%
Black	733	587	697	873
Black %	22.7%	18.2%	21.5%	27.0%

Citizen Voting Age Population (CVAP)

	1	2	3	4
Total CVAP	2,739	2,422	1,793	2,186
Other CVAP	1,107	1,107	910	1,030
Other CVAP %	40.4%	45.7%	50.8%	47.1%
Latino CVAP	649	741	472	698
Latino CVAP %	23.7%	30.6%	26.3%	31.9%
Asian CVAP	3	30	29	62
Asian CVAP %	0.1%	1.2%	1.6%	2.8%
Black CVAP	980	544	382	396
Black CVAP %	35.8%	22.5%	21.3%	18.1%

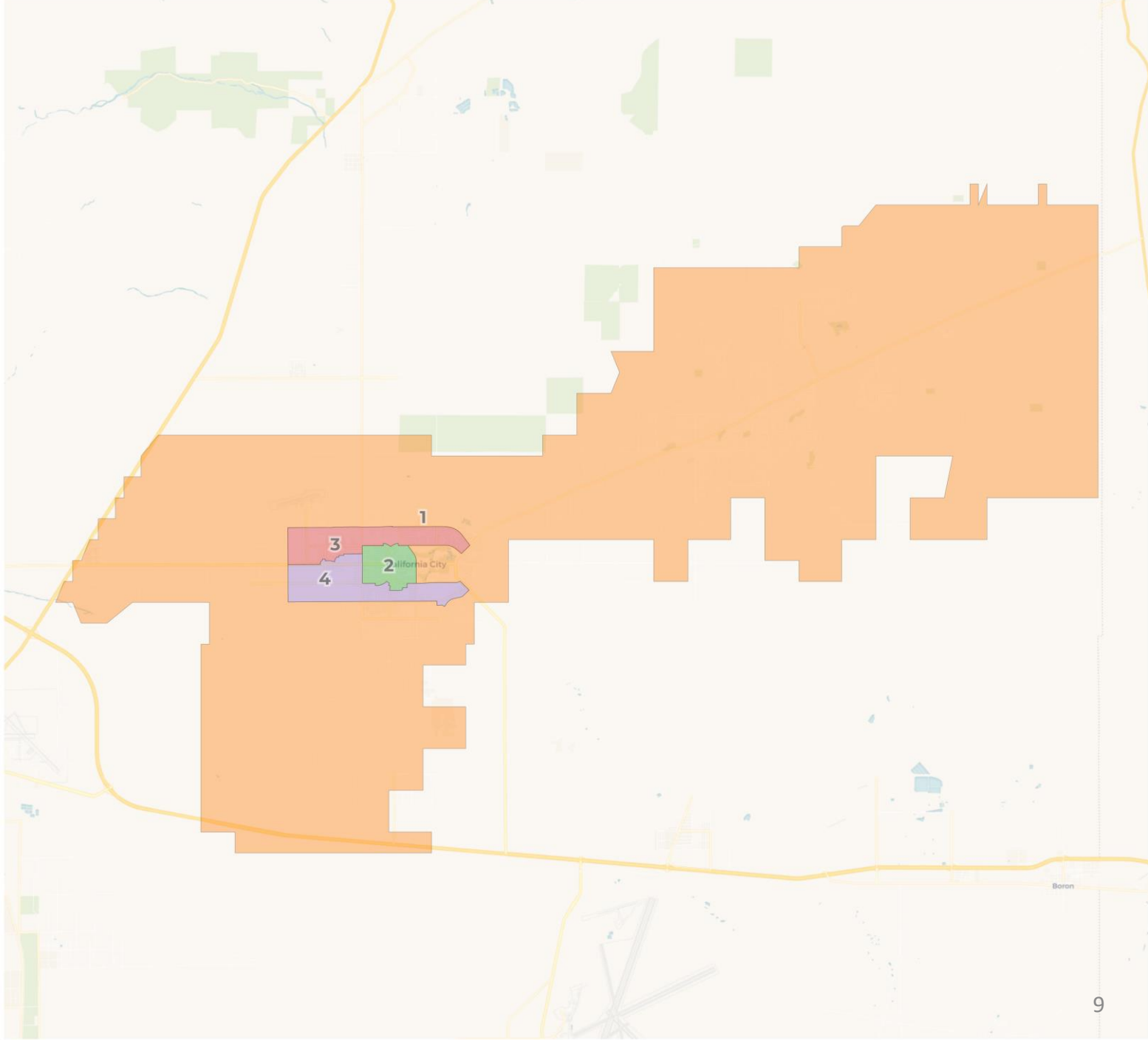


2020 Census

	1	2	3	4
Population	3,297	3,319	3,189	3,118
Deviation	66	88	-42	-113
Deviation %	2.0%	2.7%	-1.3%	-3.5%
Other	1,201	1,480	1,408	1,372
Other %	36.4%	Total Deviation: 6.2%		44.0%
Latino	1,147	948	1,037	1,091
Latino %	34.8%	28.6%	32.5%	35.0%
Asian	81	104	93	71
Asian %	2.5%	3.1%	2.9%	2.3%
Black	868	787	651	584
Black %	26.3%	23.7%	20.4%	18.7%

Citizen Voting Age Population (CVAP)

	1	2	3	4
Total CVAP	2,023	2,402	2,355	2,360
Other CVAP	877	1,250	977	1,050
Other CVAP %	43.4%	52.0%	41.5%	44.5%
Latino CVAP	655	613	707	585
Latino CVAP %	32.4%	25.5%	30.0%	24.8%
Asian CVAP	51	19	22	32
Asian CVAP %	2.5%	0.8%	0.9%	1.4%
Black CVAP	440	520	649	693
Black CVAP %	21.7%	21.6%	27.6%	29.4%

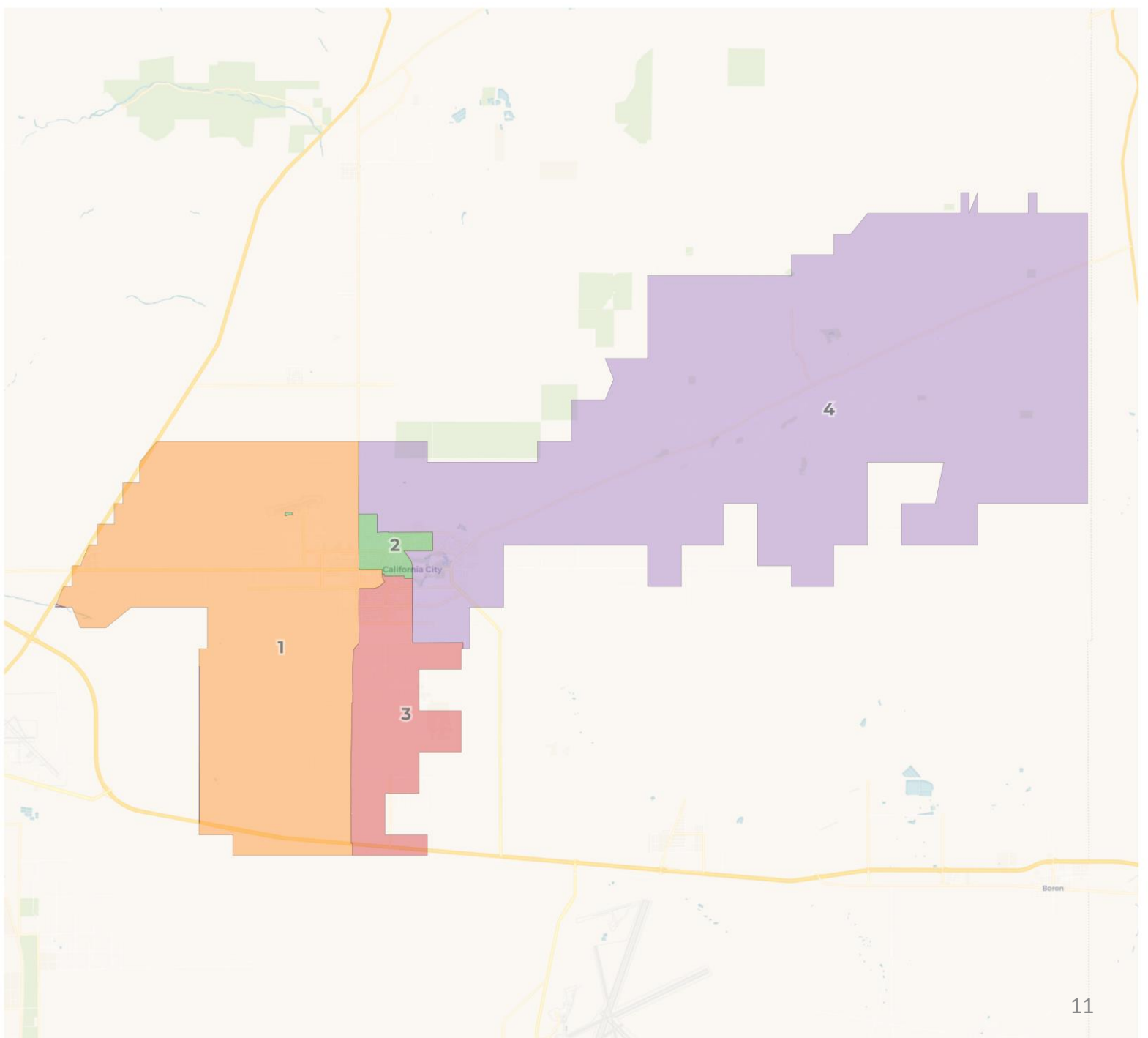


2020 Census

	1	2	3	4
Population	3,407	3,237	3,147	3,132
Deviation	176	6	-84	-99
Deviation %	5.4%	0.2%	-2.6%	-3.1%
Other	1,516	1,297	1,381	1,267
Other %	44.5%	Total Deviation: 8.5%		40.5%
Latino	1,133	1,068	1,016	1,006
Latino %	33.3%	33.0%	32.3%	32.1%
Asian	81	105	91	72
Asian %	2.4%	3.2%	2.9%	2.3%
Black	677	767	659	787
Black %	19.9%	23.7%	20.9%	25.1%

Citizen Voting Age Population (CVAP)

	1	2	3	4
Total CVAP	2,679	2,110	2,241	2,110
Other CVAP	1,169	1,075	1,089	821
Other CVAP %	43.6%	50.9%	48.6%	38.9%
Latino CVAP	608	574	697	681
Latino CVAP %	22.7%	27.2%	31.1%	32.3%
Asian CVAP	11	41	42	30
Asian CVAP %	0.4%	1.9%	1.9%	1.4%
Black CVAP	891	420	413	578
Black CVAP %	33.3%	19.9%	18.4%	27.4%



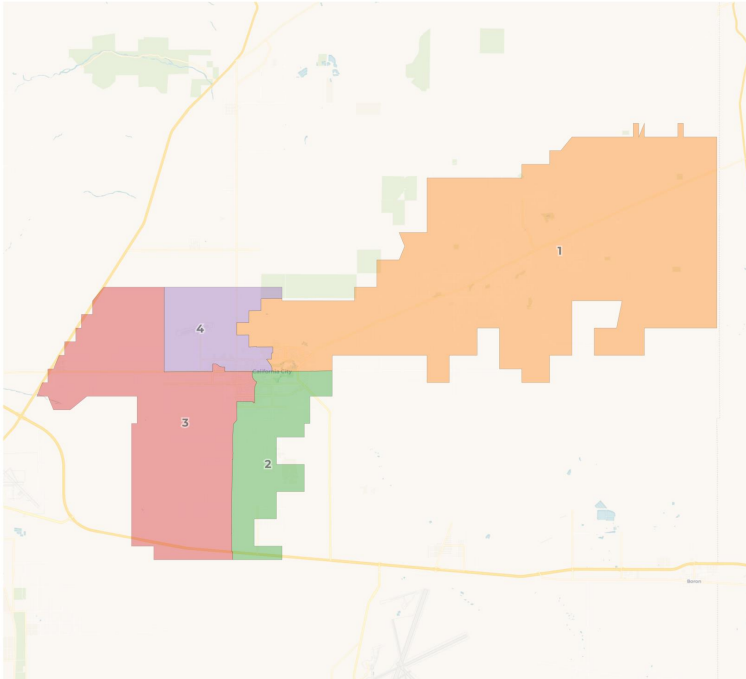
2020 Census

	1	2	3	4
Population	3,174	3,135	3,268	3,346
Deviation	-57	-96	37	115
Deviation %	-1.8%	-3.0%	1.1%	3.6%
Other	1,210	1,287	1,432	1,532
Other %	38.1%	Total Deviation: 6.6%		45.8%
Latino	1,122	919	1,088	1,094
Latino %	35.3%	29.3%	33.3%	32.7%
Asian	85	97	72	95
Asian %	2.7%	3.1%	2.2%	2.8%
Black	757	832	676	625
Black %	23.9%	26.5%	20.7%	18.7%

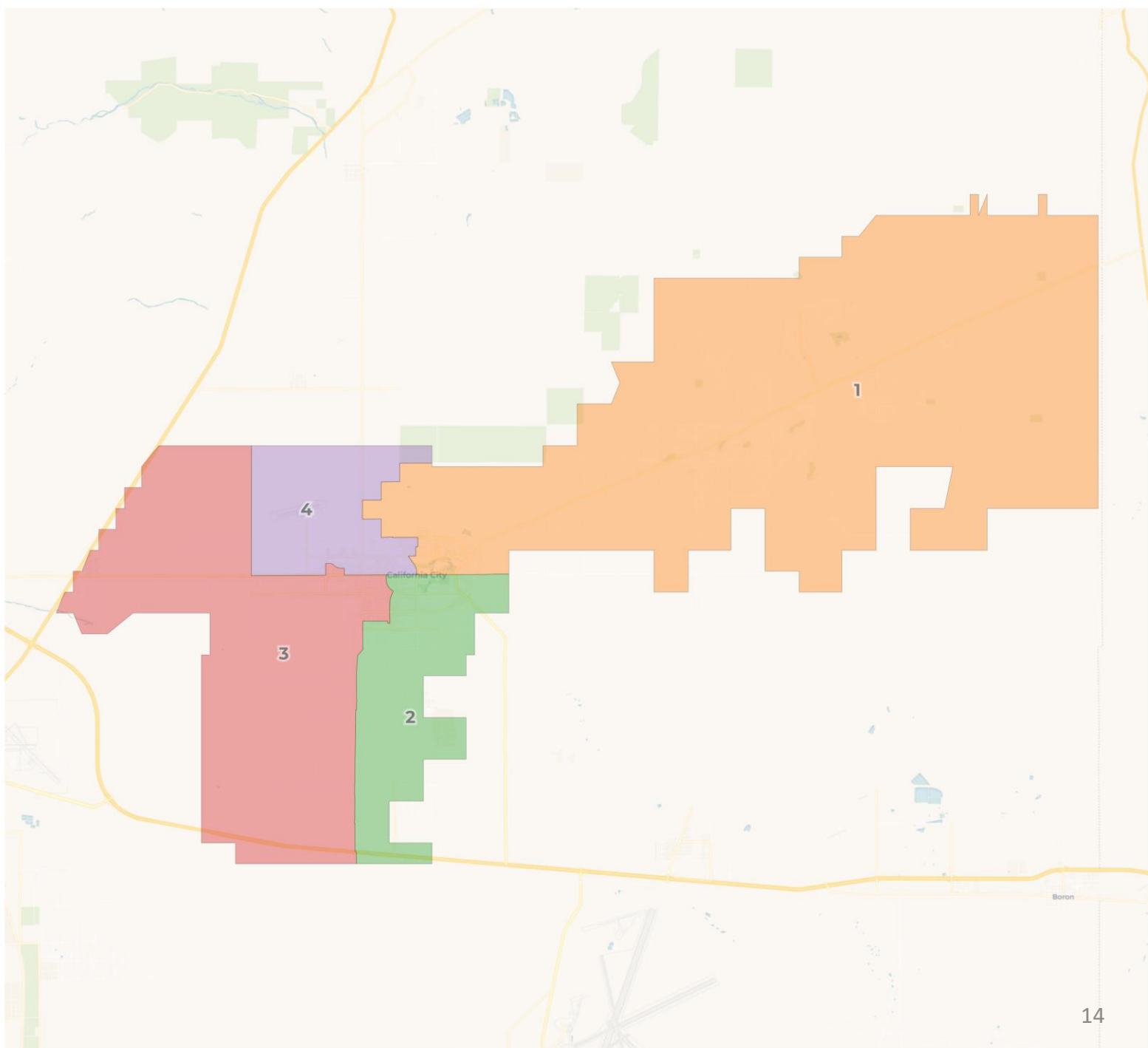
Citizen Voting Age Population (CVAP)

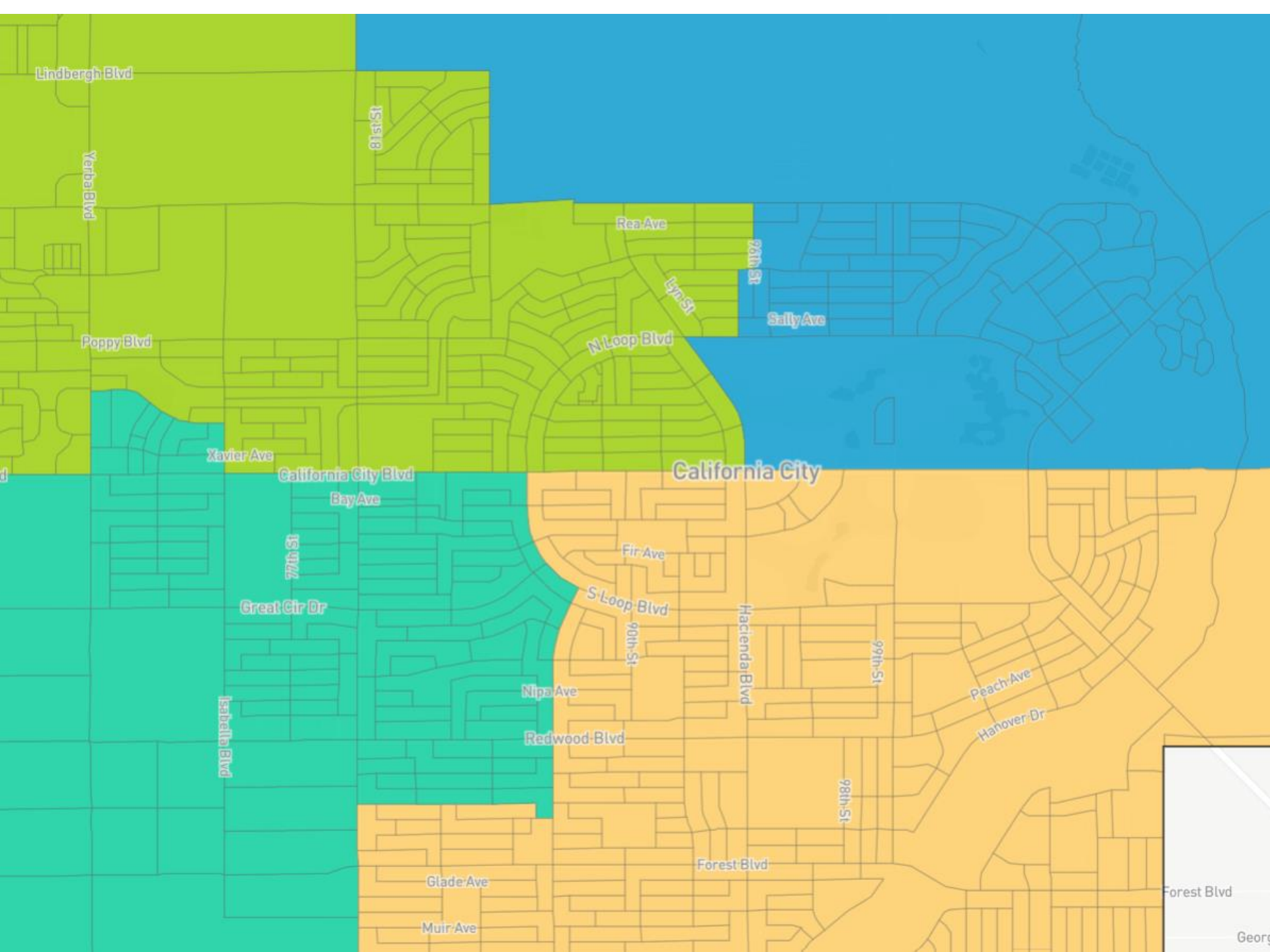
	1	2	3	4
Total CVAP	1,936	2,206	2,135	2,863
Other CVAP	794	1,186	975	1,199
Other CVAP %	41.0%	53.8%	45.7%	41.9%
Latino CVAP	663	552	661	684
Latino CVAP %	34.2%	25.0%	31.0%	23.9%
Asian CVAP	65	38	16	5
Asian CVAP %	3.4%	1.7%	0.7%	0.2%
Black CVAP	414	430	483	975
Black CVAP %	21.4%	19.5%	22.6%	34.1%

Draft Maps: Draft A



- Total Population Deviation: 7.7%
- Used public map ID 289096 as a template
 - Used main roads as much as possible and increased compactness





Lindbergh Blvd

Verba Blvd

81st St

Rea Ave

92nd St

Sally Ave

Poppy Blvd

N Loop Blvd

California City

Xavier Ave

California City Blvd

Bay Ave

77th St

Great Cir Dr

Isabella Blvd

Fir Ave

S Loop Blvd

90th St

Nipa Ave

Redwood Blvd

Hacienda Blvd

99th St

Peach Ave

Hanover Dr

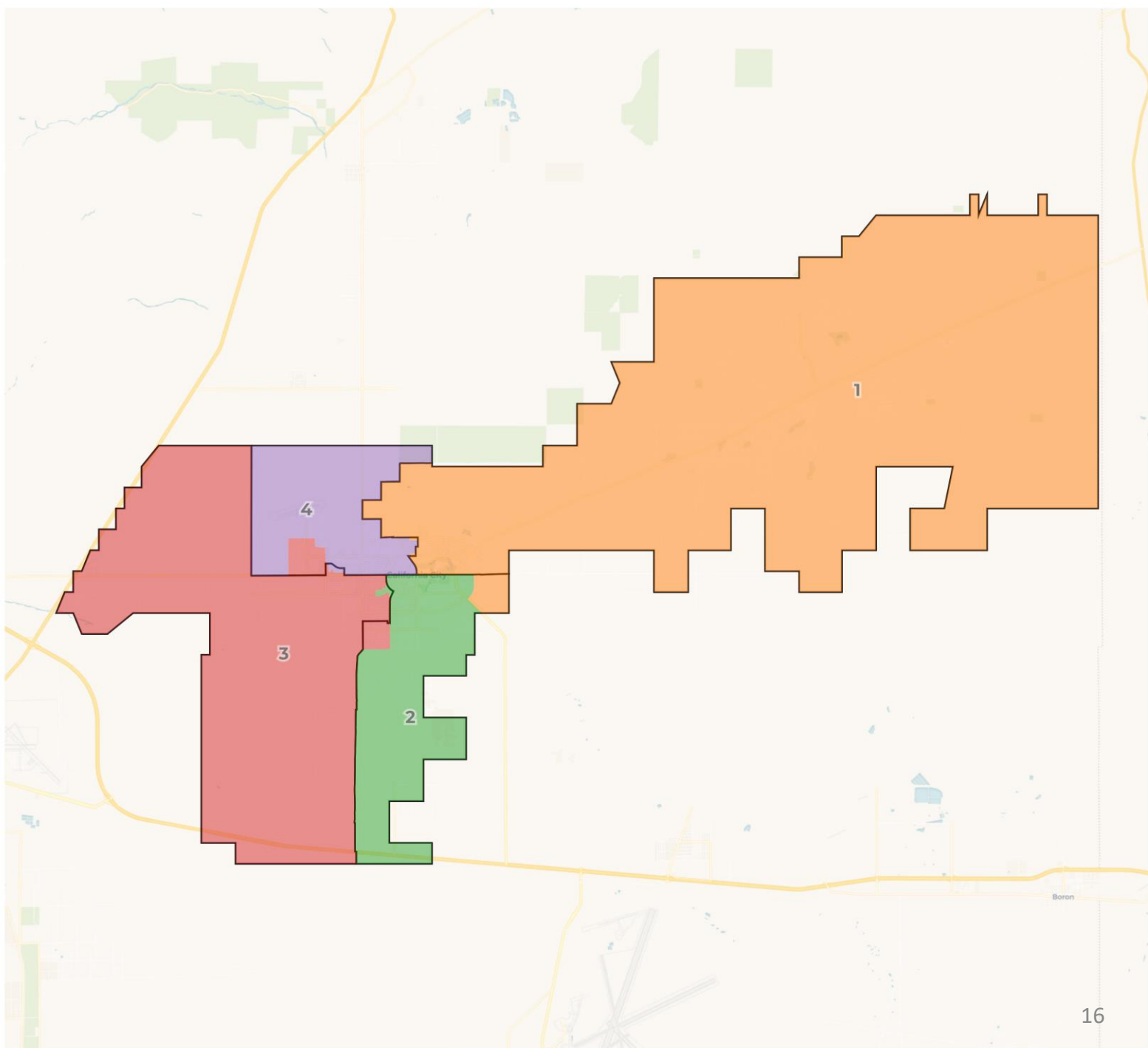
Glade Ave

Forest Blvd

Muir Ave

Forest Blvd

Geor



2020 Census

	1	2	3	4
Population	3,149	3,252	3,137	3,385
Deviation	-82	21	-94	154
Deviation %	-2.5%	0.6%	-2.9%	4.8%
Other	1,396	1,466	1,315	1,284
Other %	44.3%		41.9%	37.9%
Latino	952		1,078	1,104
Latino %	30.2%	33.5%	34.4%	32.6%
Asian	82	107	75	85
Asian %	2.6%	3.3%	2.4%	2.5%
Black	719	590	669	912
Black %	22.8%	18.1%	21.3%	26.9%

Total Deviation: 7.7%

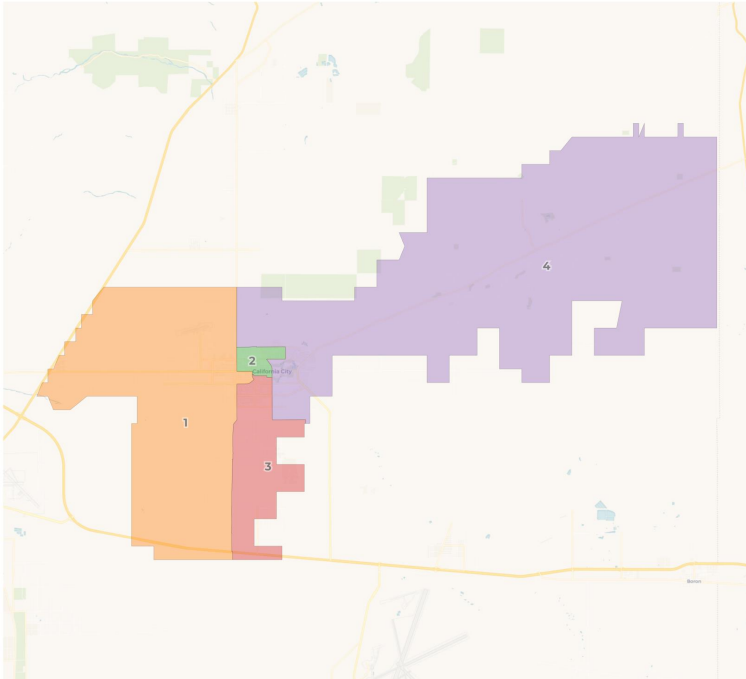
Citizen Voting Age Population (CVAP)

	1	2	3	4
Total CVAP	2,676	2,445	1,723	2,296
Other CVAP	1,079	1,146	844	1,085
Other CVAP %	40.3%	46.9%	49.0%	47.3%
Latino CVAP	627	743	464	726
Latino CVAP %	23.4%	30.4%	26.9%	31.6%
Asian CVAP	3	31	28	62
Asian CVAP %	0.1%	1.3%	1.6%	2.7%
Black CVAP	967	525	387	423
Black CVAP %	36.1%	21.5%	22.5%	18.4%

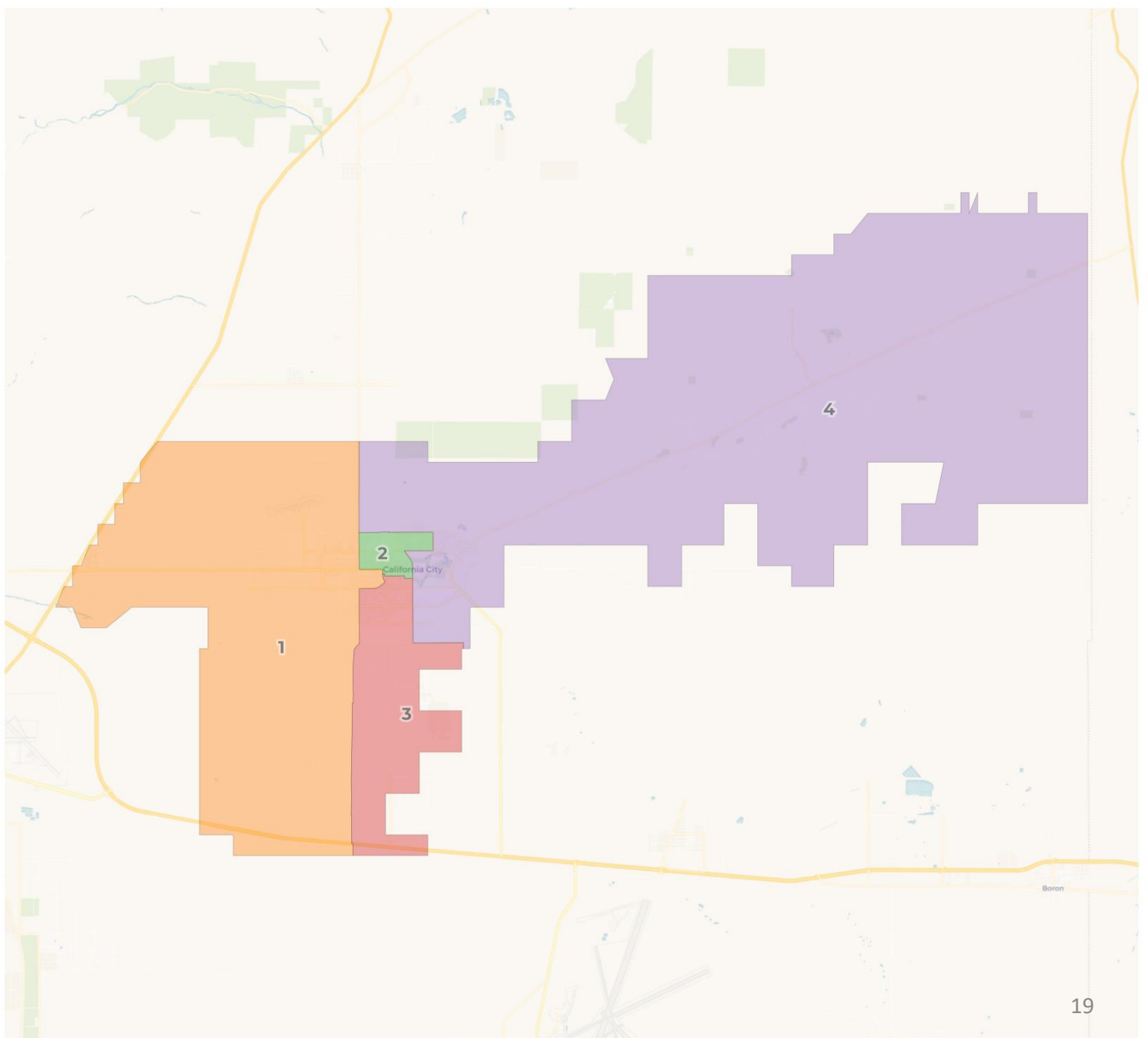
Draft Maps: Draft B

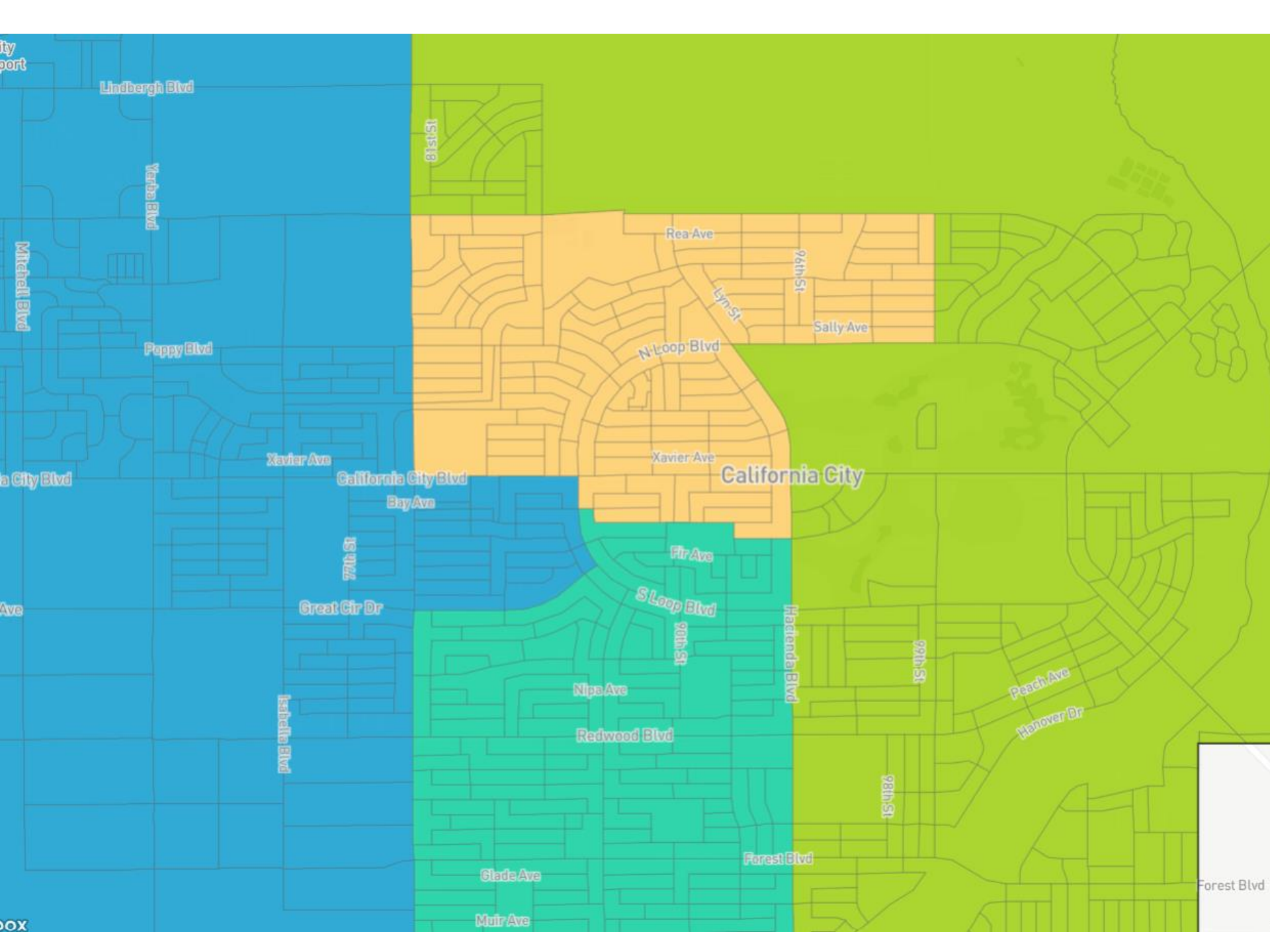
City of California City
Draft B (modified ID 289684)

 REDISTRICTING
PARTNERS



- Total Population Deviation: 6.6%
- Used public map ID 289684 as a template
 - Used main roads as much as possible and fixed contiguity issue in District 1





Lindbergh Blvd

Yerba Blvd

Mitchell Blvd

California City Blvd

Ave

BOX

Poppy Blvd

Xavier Ave

California City Blvd

Bay Ave

77th St

Great Cir Dr

Isabella Blvd

81st St

Rea Ave

Lynn St

96th St

Sally Ave

N-Loop Blvd

Xavier Ave

California City

Fir Ave

S Loop Blvd

90th St

Nipa Ave

Redwood Blvd

Glade Ave

Muir Ave

Forest Blvd

Hacienda Blvd

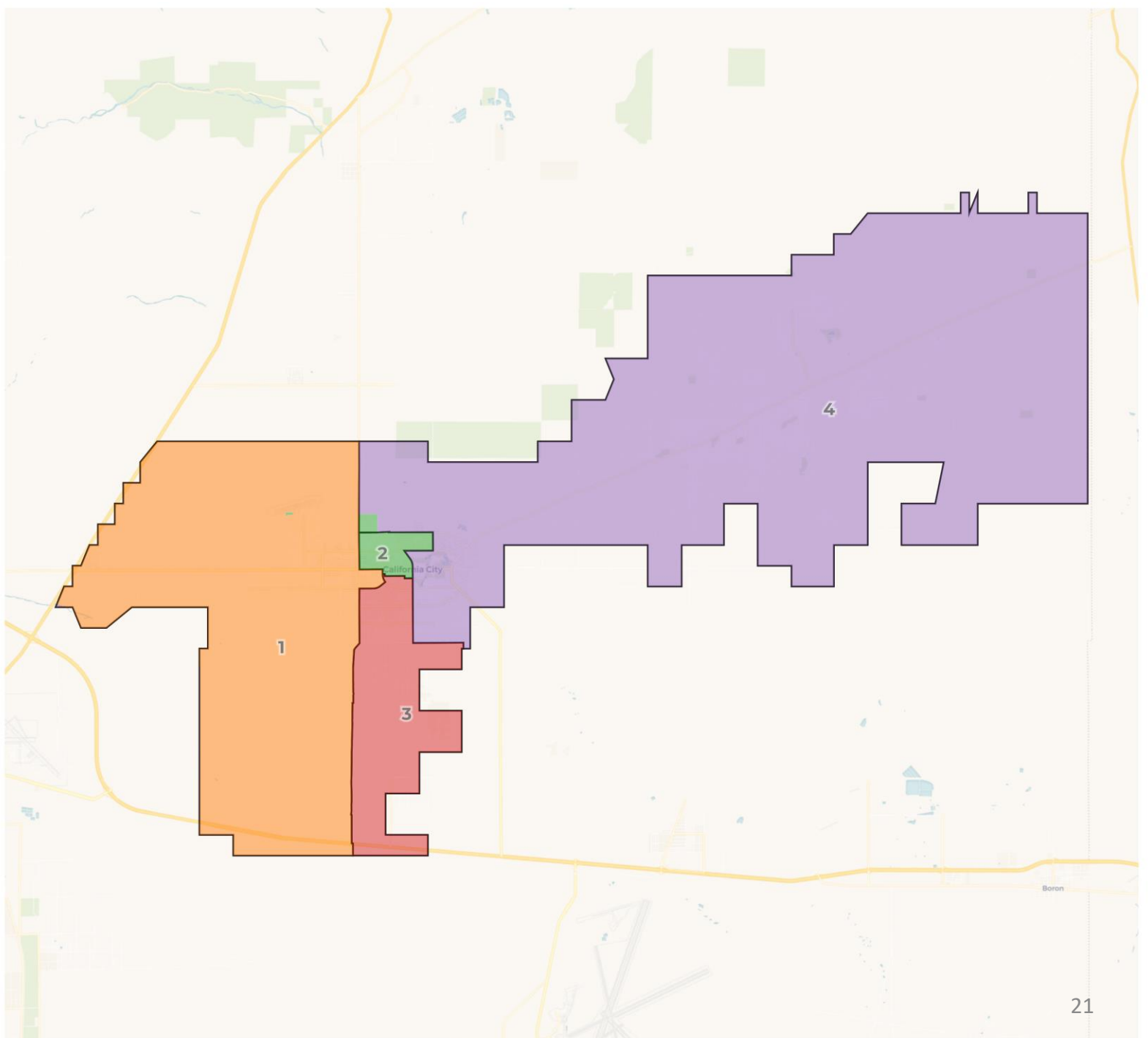
90th St

98th St

Peach Ave

Hanover Dr

Forest Blvd



2020 Census

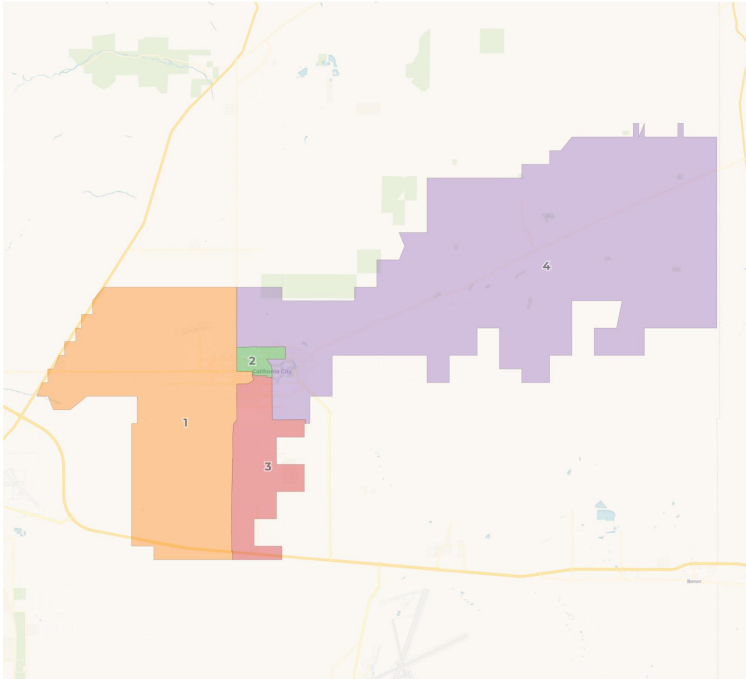
	1	2	3	4
Population	3,174	3,135	3,268	3,346
Deviation	-57	-96	37	115
Deviation %	-1.8%	-3.0%	1.1%	3.6%
Other	1,210	1,287	1,432	1,532
Other %	38.1%		43.8%	45.8%
Latino	1,122		1,088	1,094
Latino %	35.3%	29.3%	33.3%	32.7%
Asian	85	97	72	95
Asian %	2.7%	3.1%	2.2%	2.8%
Black	757	832	676	625
Black %	23.9%	26.5%	20.7%	18.7%

Total Deviation: 6.6%

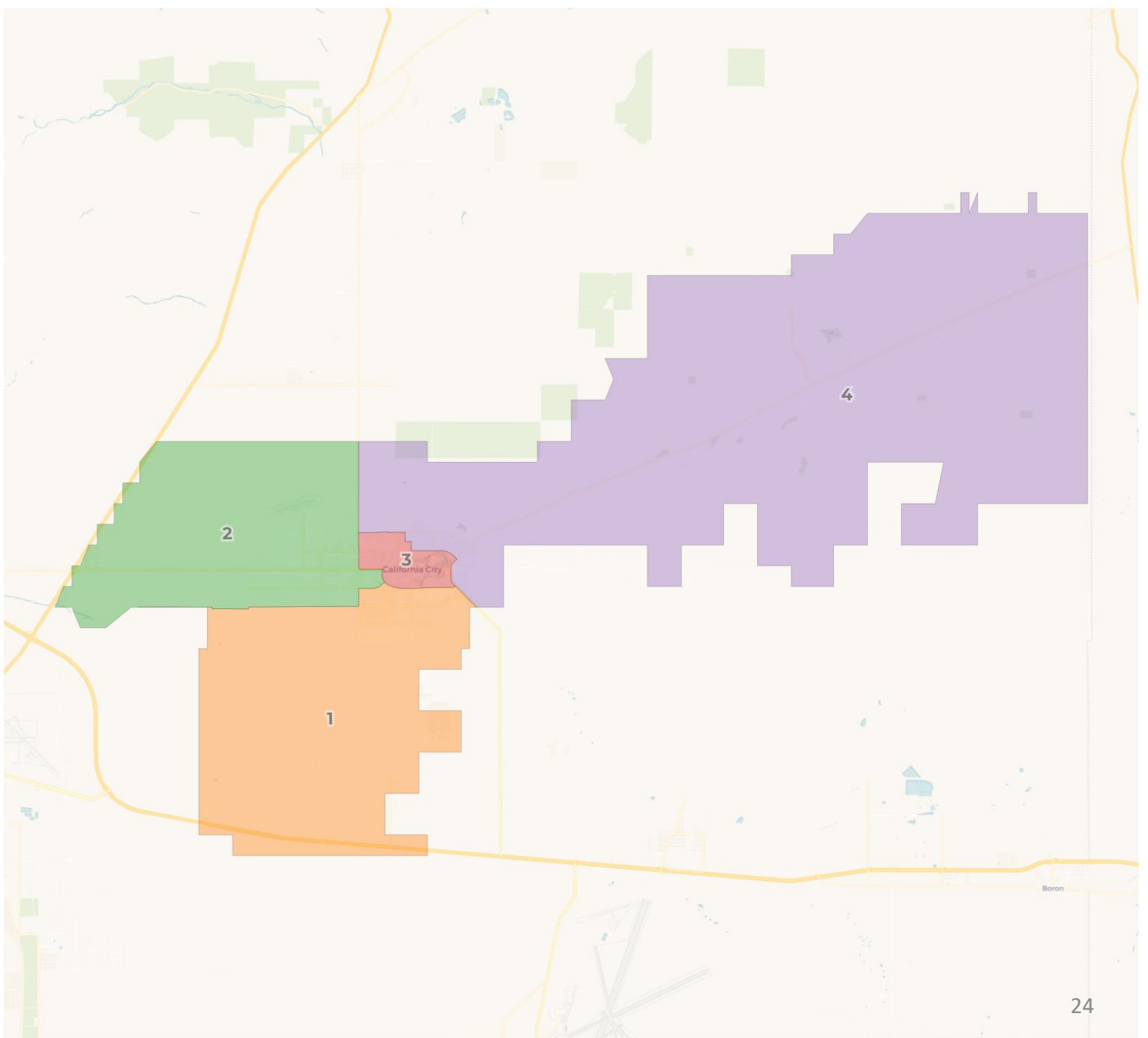
Citizen Voting Age Population (CVAP)

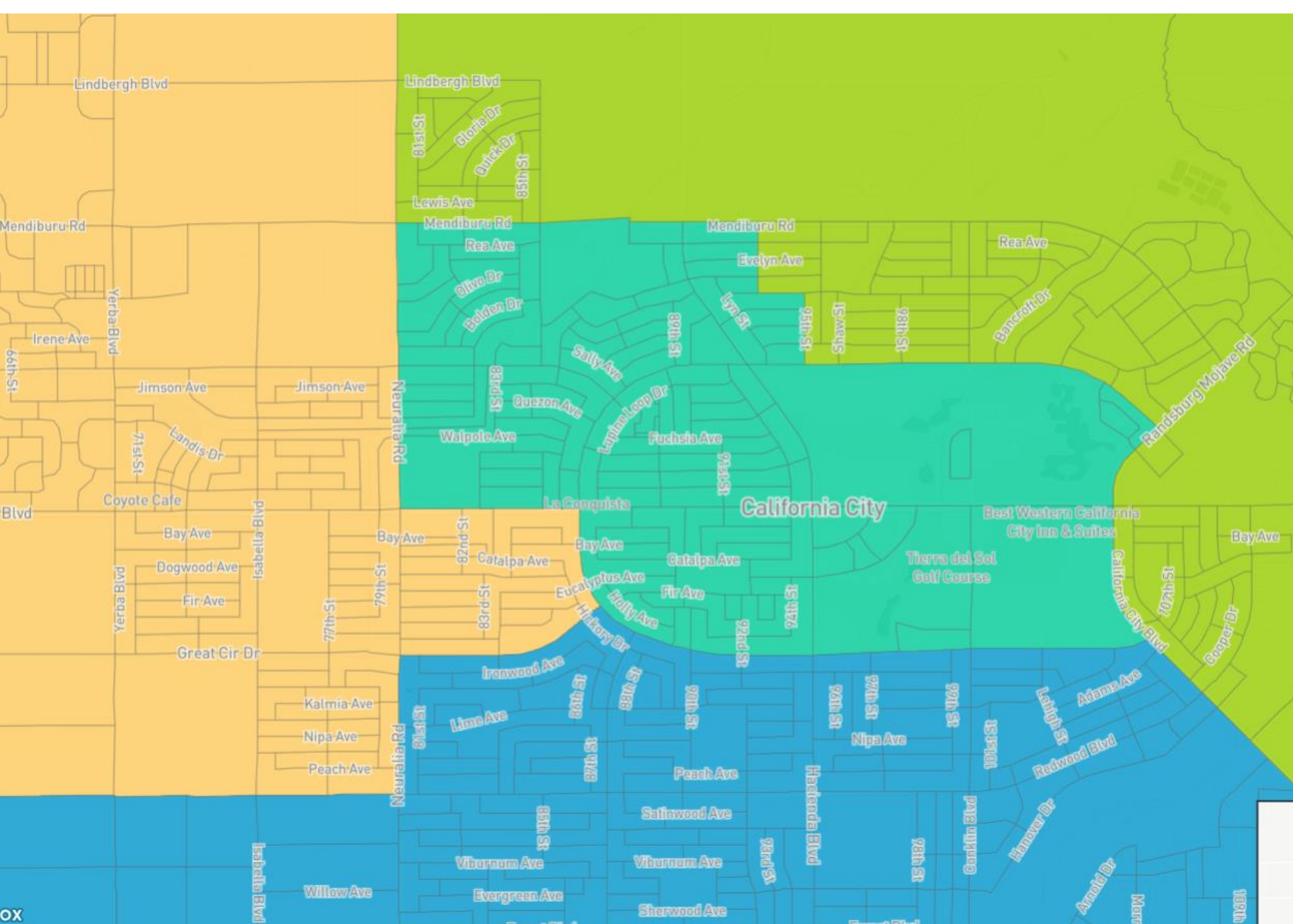
	1	2	3	4
Total CVAP	1,936	2,206	2,135	2,863
Other CVAP	794	1,186	975	1,199
Other CVAP %	41.0%	53.8%	45.7%	41.9%
Latino CVAP	663	552	661	684
Latino CVAP %	34.2%	25.0%	31.0%	23.9%
Asian CVAP	65	38	16	5
Asian CVAP %	3.4%	1.7%	0.7%	0.2%
Black CVAP	414	430	483	975
Black CVAP %	21.4%	19.5%	22.6%	34.1%

Draft Maps: Draft C



- Total Population Deviation: 7.2%
- Different configuration of the City to provide visual options
 - Uses main roads as much as possible
 - Compact southern, eastern, and western districts along with a central district



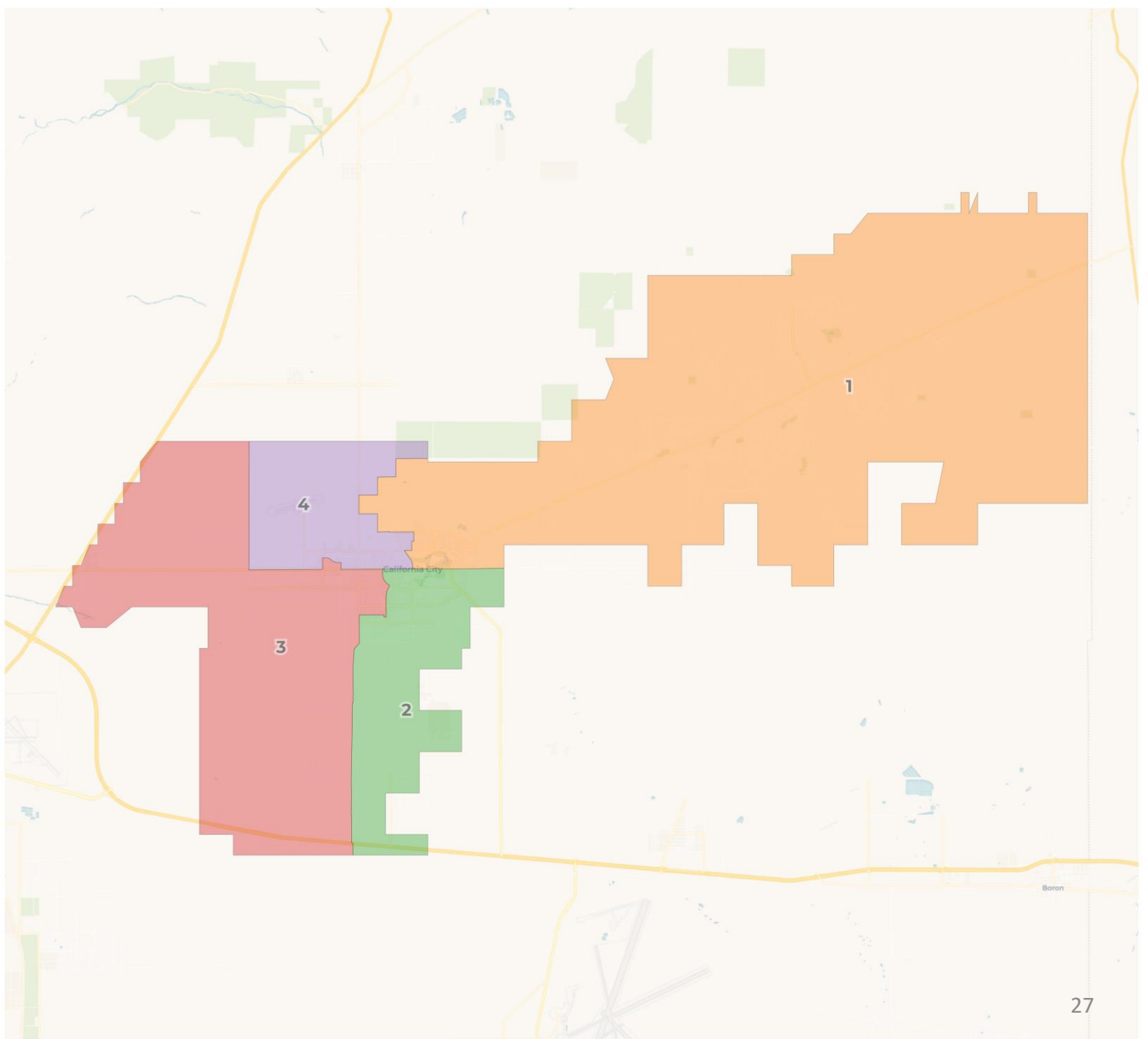


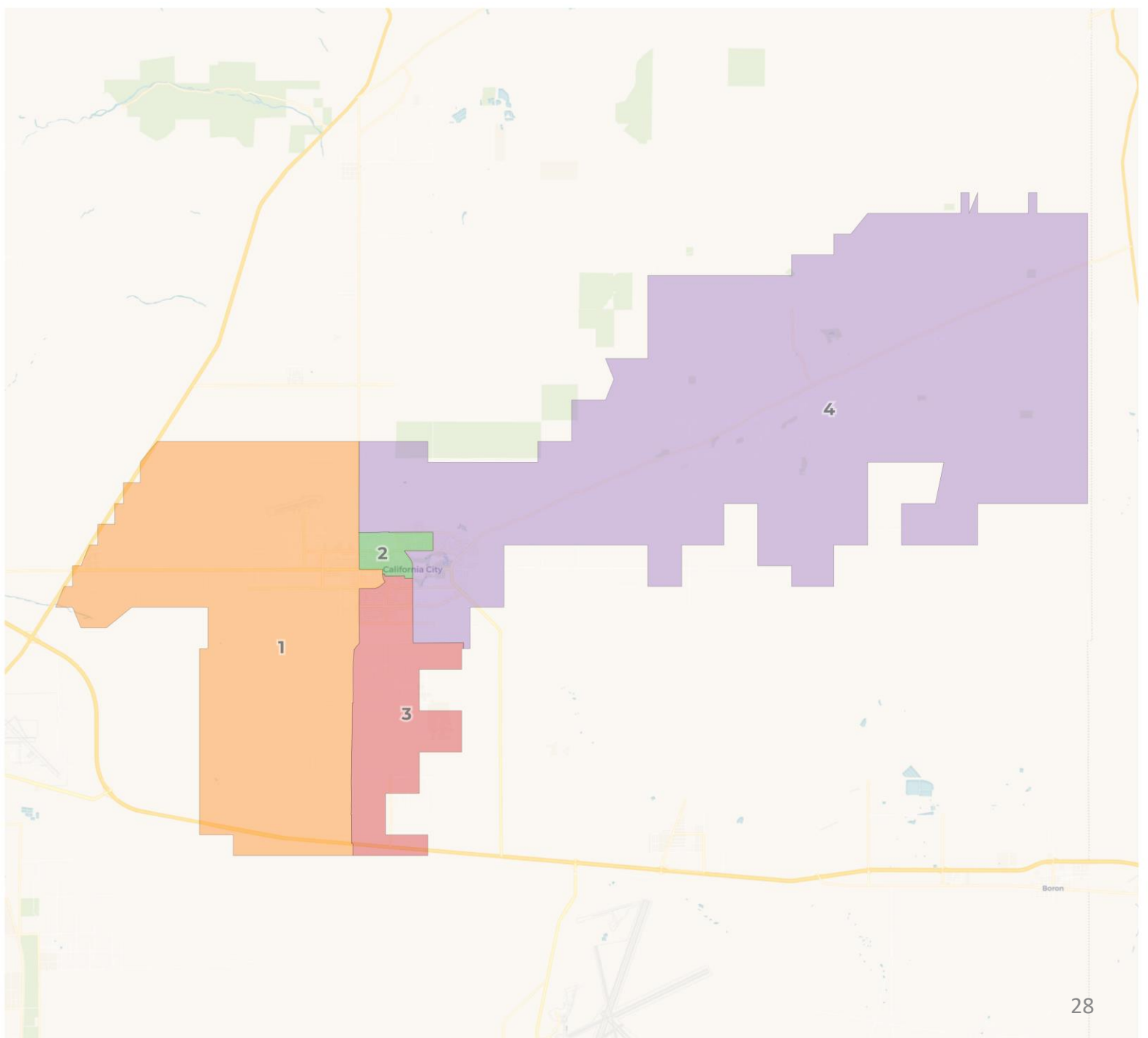
2020 Census

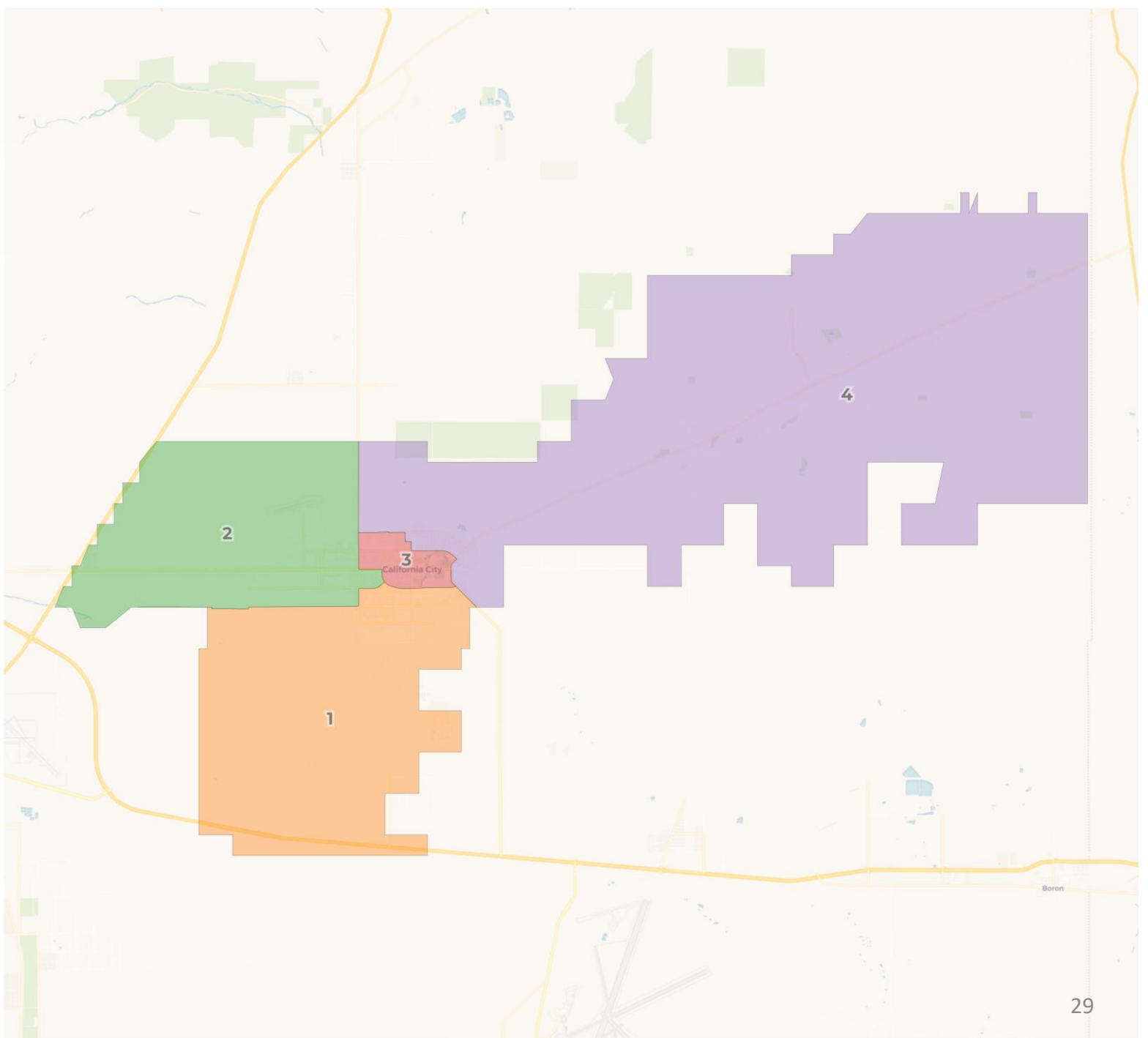
	1	2	3	4
Population	3,373	3,174	3,142	3,234
Deviation	142	-57	-89	3
Deviation %	4.4%	-1.8%	-2.8%	0.1%
Other	1,462	1,210	1,278	1,511
Other %	43.3%	Total Deviation: 7.2%		46.7%
Latino	1,134			977
Latino %	33.6%	35.3%	31.1%	30.6%
Asian	83	85	105	76
Asian %	2.5%	2.7%	3.3%	2.4%
Black	694	757	782	657
Black %	20.6%	23.9%	24.9%	20.3%

Citizen Voting Age Population (CVAP)

	1	2	3	4
Total CVAP	2,185	1,936	2,185	2,834
Other CVAP	995	794	1,158	1,207
Other CVAP %	45.5%	41.0%	53.0%	42.6%
Latino CVAP	677	663	570	650
Latino CVAP %	31.0%	34.2%	26.1%	22.9%
Asian CVAP	10	65	45	4
Asian CVAP %	0.5%	3.4%	2.1%	0.1%
Black CVAP	503	414	412	973
Black CVAP %	23.0%	21.4%	18.9%	34.3%







City of California City

First two meetings devoted to community of interest
information gathering and education on districting process

Proposed Schedule:

February 25, 2025

Public Hearing #1 (Pre-map)

March 11, 2025

Public Hearing #2 (Pre-map)

March 25, 2025

Public Hearing #3 (Post-map)

April 8, 2025

Public Hearing #4 (Post-map)

Potential Final Hearing:

April 16, 2025 – or –
April 22, 2025

Public Hearing #5: final vote



**REDISTRICTING
PARTNERS**