

Public Maps: FAIR MAPS Act Assessment

The following maps were submitted by April 1, 2025 and can be considered during the April 8 public hearing

Under the FAIR MAPS Act, the City of California City is required to follow a ranked list of criteria in their districting process:

- Relatively equal in population size – total deviation is under 10%
- Contiguous
- Maintains “communities of interest”
- Easily identifiable and understandable lines, following city, natural, and man-made boundaries
- Compact

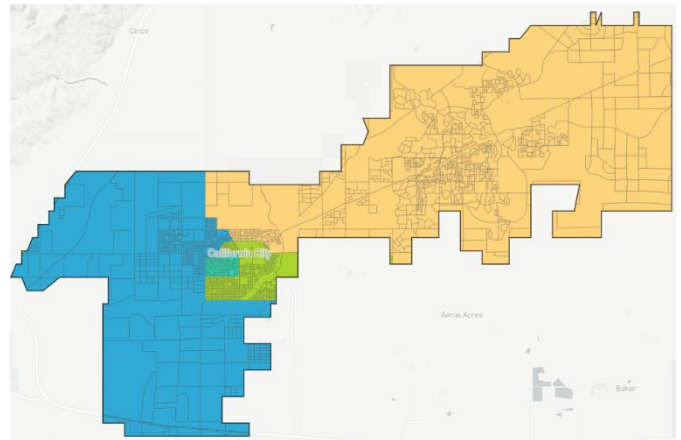
As demographers, we can assess all criteria objectively except for “maintaining communities of interest.” This particular criterion is subjective by definition and should be discussed by the public and the City Council to determine how well these maps fulfil this criterion.

ID 292639

Total Deviation: 4.8%

Date of submission: 4/1/2025

Relatively equal in population size?	✓
Contiguous?	✓
Lines are easy to understand and identify?	✓
Compact?	✓

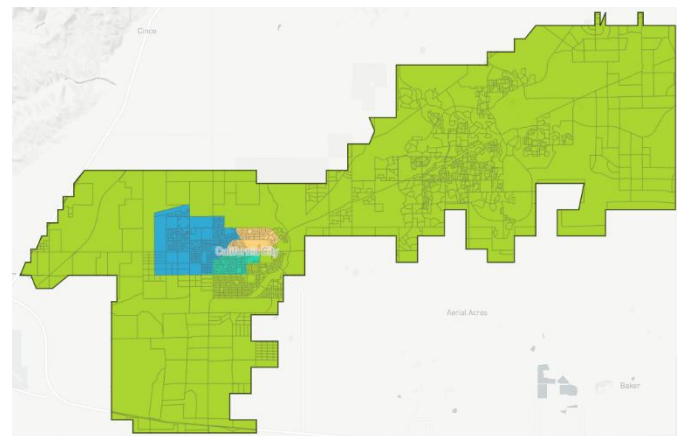


ID 292636

Total Deviation: 5%

Date of submission: 4/1/2025

Relatively equal in population size?	✓
Contiguous?	✓
Lines are easy to understand and identify?	✓
Compact?	✓



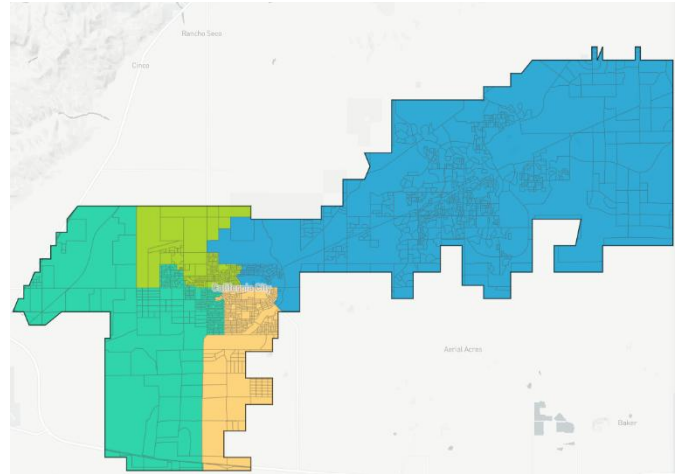
The following maps were submitted by March 17, 2025 and were considered at the March 25 public hearing

ID 289096

Total Deviation: 0.5%

Date of submission: 3/12/2025

Relatively equal in population size?	✓
Contiguous?	✓
Lines are easy to understand and identify?	✓
Compact?	✓



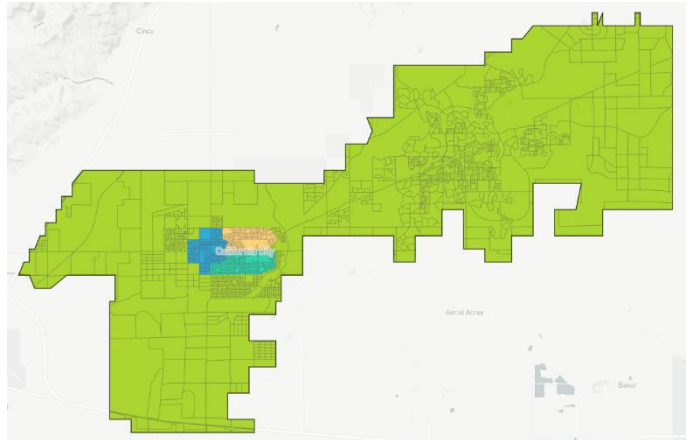
ID 289575

Total Deviation: 6.2%

Date of submission: 3/14/2025

Relatively equal in population size?	✓
Contiguous?	✓
Lines are easy to understand and identify?	✓
Compact?	✓*

*City Council should discuss whether the green district makes sense for the communities within the city if they want to use this as a potential map.



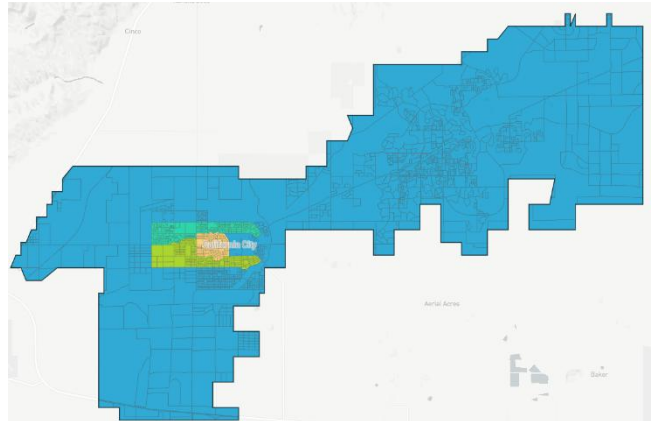
ID 289578

Total Deviation: 8.5%

Date of submission: 3/14/2025

Relatively equal in population size?	✓
Contiguous?	✓
Lines are easy to understand and identify?	✓
Compact?	✓*

*City Council should discuss whether the blue district makes sense for the communities within the city if they want to use this as a potential map.


ID 289684

Total Deviation: 6.6%

Date of submission: 3/15/2025

Relatively equal in population size?	✓
Contiguous?	✗*
Lines are easy to understand and identify?	✓
Compact?	✓

*Slight contiguity issue in the blue district/easy to fix

