

# City of California City

**Draft Maps**  
April 8, 2025



# Agenda

## Things we will cover:

- Traditional Districting/Redistricting Principles
- Public Testimony
- Draft Maps
- Public Hearing Schedule

# Required Districting Criteria

Traditional redistricting principles used throughout the country and written into state law

There are a number of criteria that are required under the FAIR MAPS Act (ranked):

- Relatively equal size - people, not citizens
- Contiguous – districts should not hop/jump
- Maintain “*communities of interest*”
- Easily identifiable and understandable lines, following natural and man-made boundaries
- Keep districts compact – appearance/function

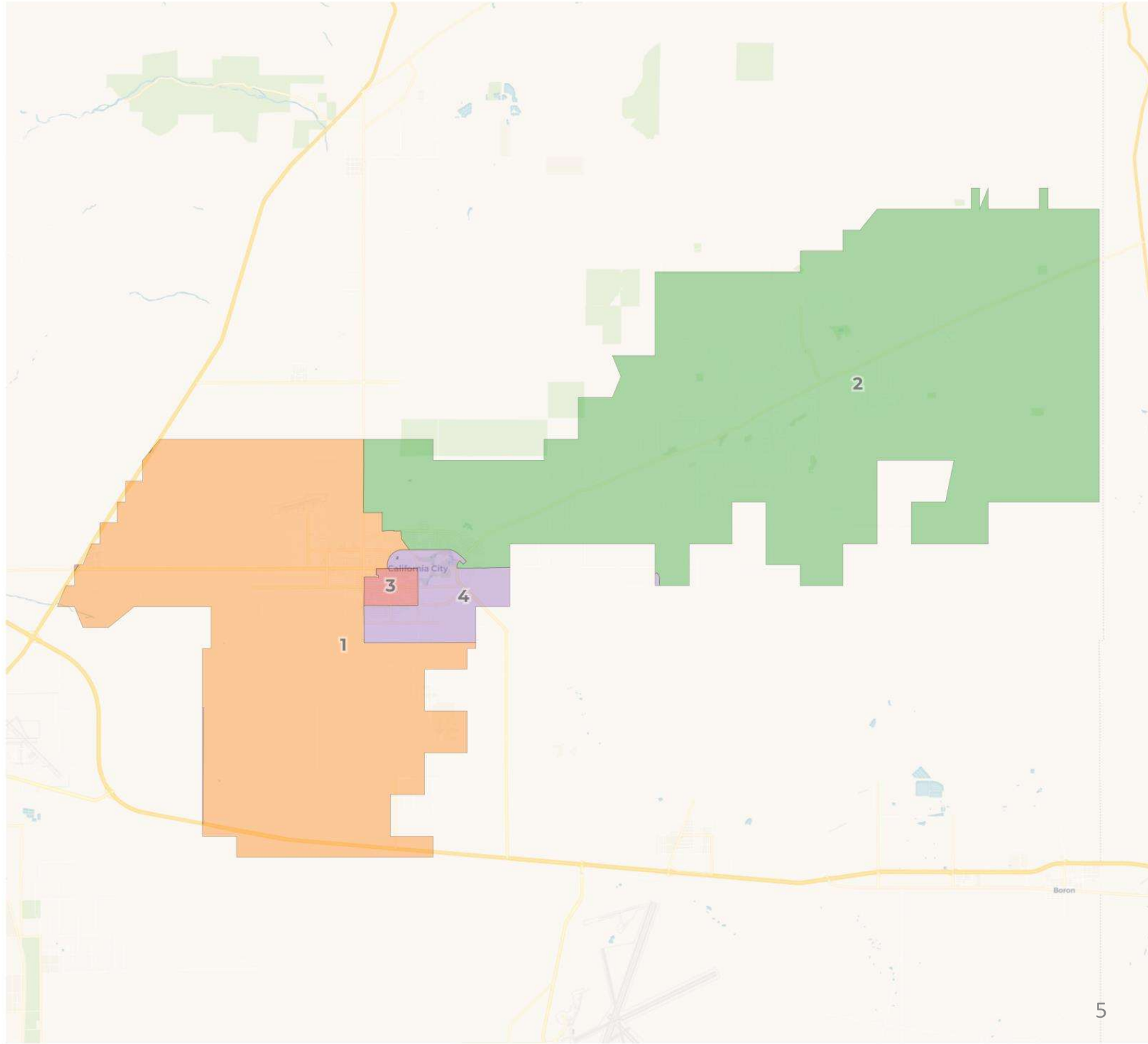
# Submitted Testimony

Maps submitted by the public

Two maps were submitted since the last meeting.

Previously, Four maps were submitted by members of the public by the March 18<sup>th</sup> deadline.

These maps influenced Draft Maps A-C.

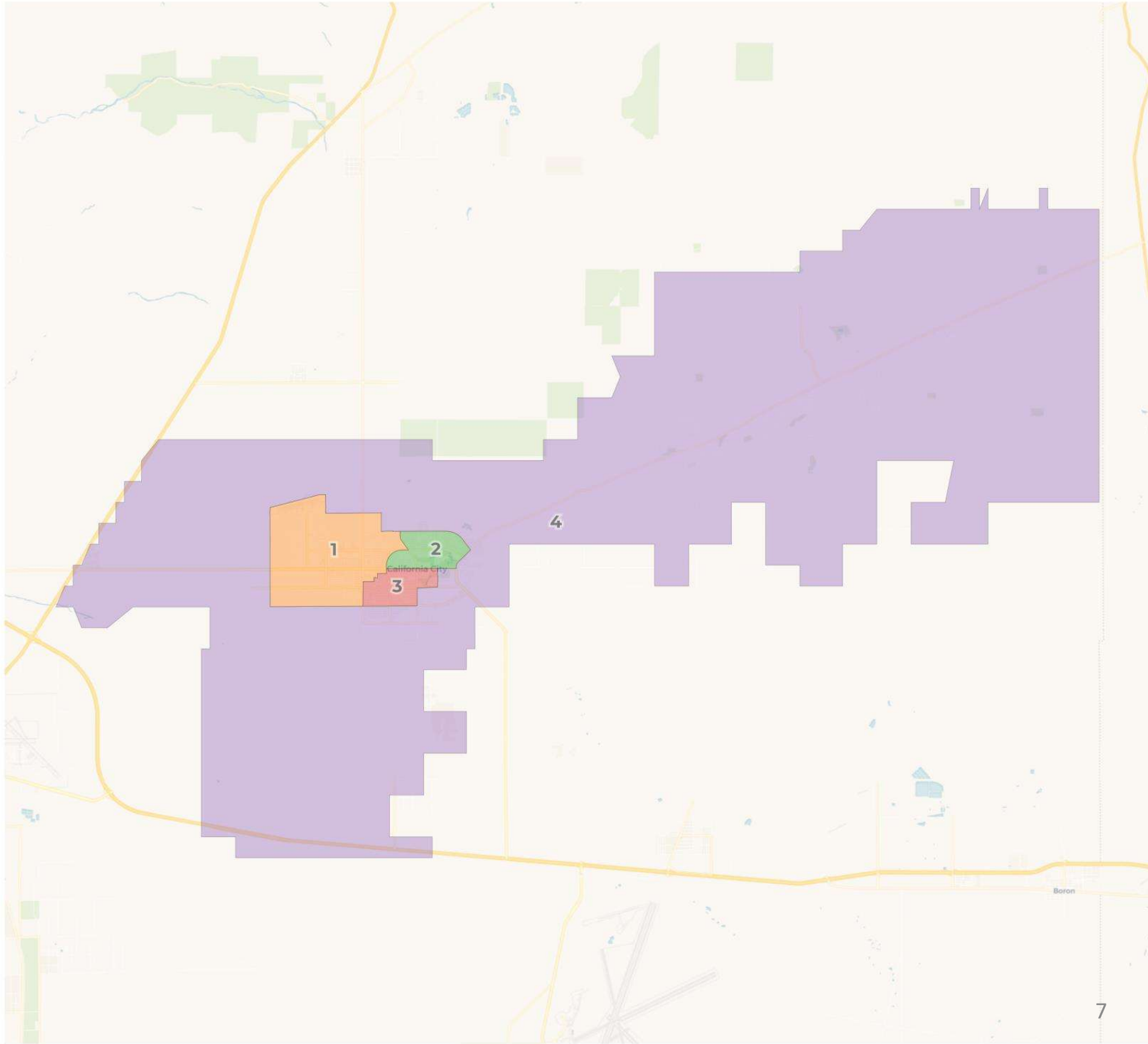


**2020 Census**

	1	2	3	4
Population	3,253	3,243	3,291	3,136
Deviation	22	12	60	-95
Deviation %	0.7%	0.4%	1.9%	-2.9%
Other	1,205	1,493	1,392	1,371
Other %	37.0%	<b>Total Deviation: 4.8%</b>		43.7%
Latino	1,112	1,007	1,129	975
Latino %	34.2%	31.1%	34.3%	31.1%
Asian	88	73	91	97
Asian %	2.7%	2.3%	2.8%	3.1%
Black	848	670	679	693
Black %	26.1%	20.7%	20.6%	22.1%

**Citizen Voting Age Population (CVAP)**

	1	2	3	4
Total CVAP	2,078	2,727	2,211	2,124
Other CVAP	907	1,180	921	1,146
Other CVAP %	43.6%	43.3%	41.7%	54.0%
Latino CVAP	694	670	689	507
Latino CVAP %	33.4%	24.6%	31.2%	23.9%
Asian CVAP	76	4	22	22
Asian CVAP %	3.7%	0.1%	1.0%	1.0%
Black CVAP	401	873	579	449
Black CVAP %	19.3%	32.0%	26.2%	21.1%



**2020 Census**

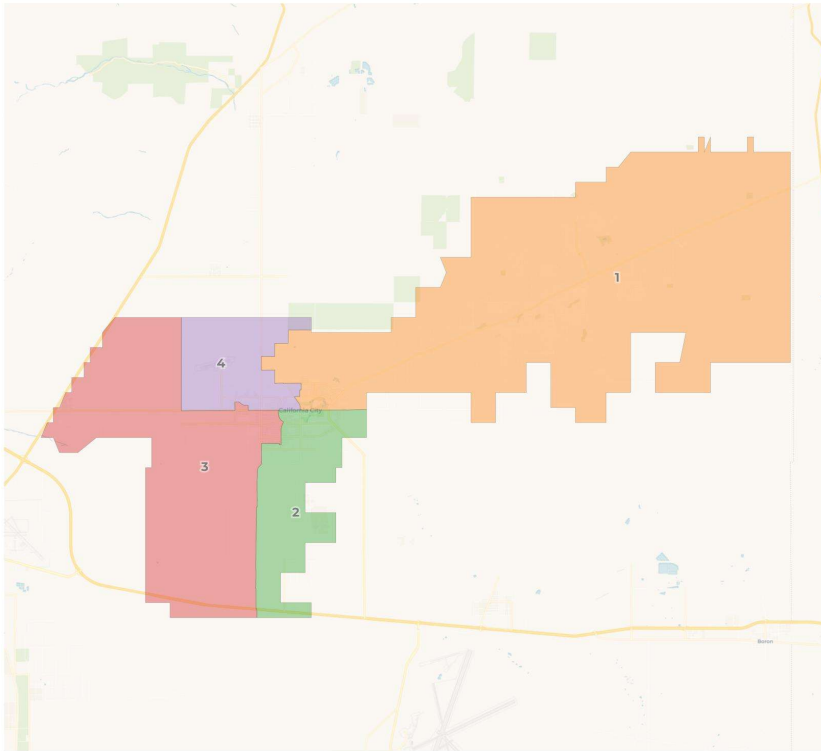
	1	2	3	4
Population	3,221	3,319	3,243	3,140
Deviation	-10	88	12	-91
Deviation %	-0.3%	2.7%	0.4%	-2.8%
Other	1,152	1,480	1,389	1,440
Other %	35.8%	Total Deviation: 5.5%		45.9%
Latino	1,107	948	1,117	1,051
Latino %	34.4%	28.6%	34.4%	33.5%
Asian	86	104	83	76
Asian %	2.7%	3.1%	2.6%	2.4%
Black	876	787	654	573
Black %	27.2%	23.7%	20.2%	18.2%

**Citizen Voting Age Population (CVAP)**

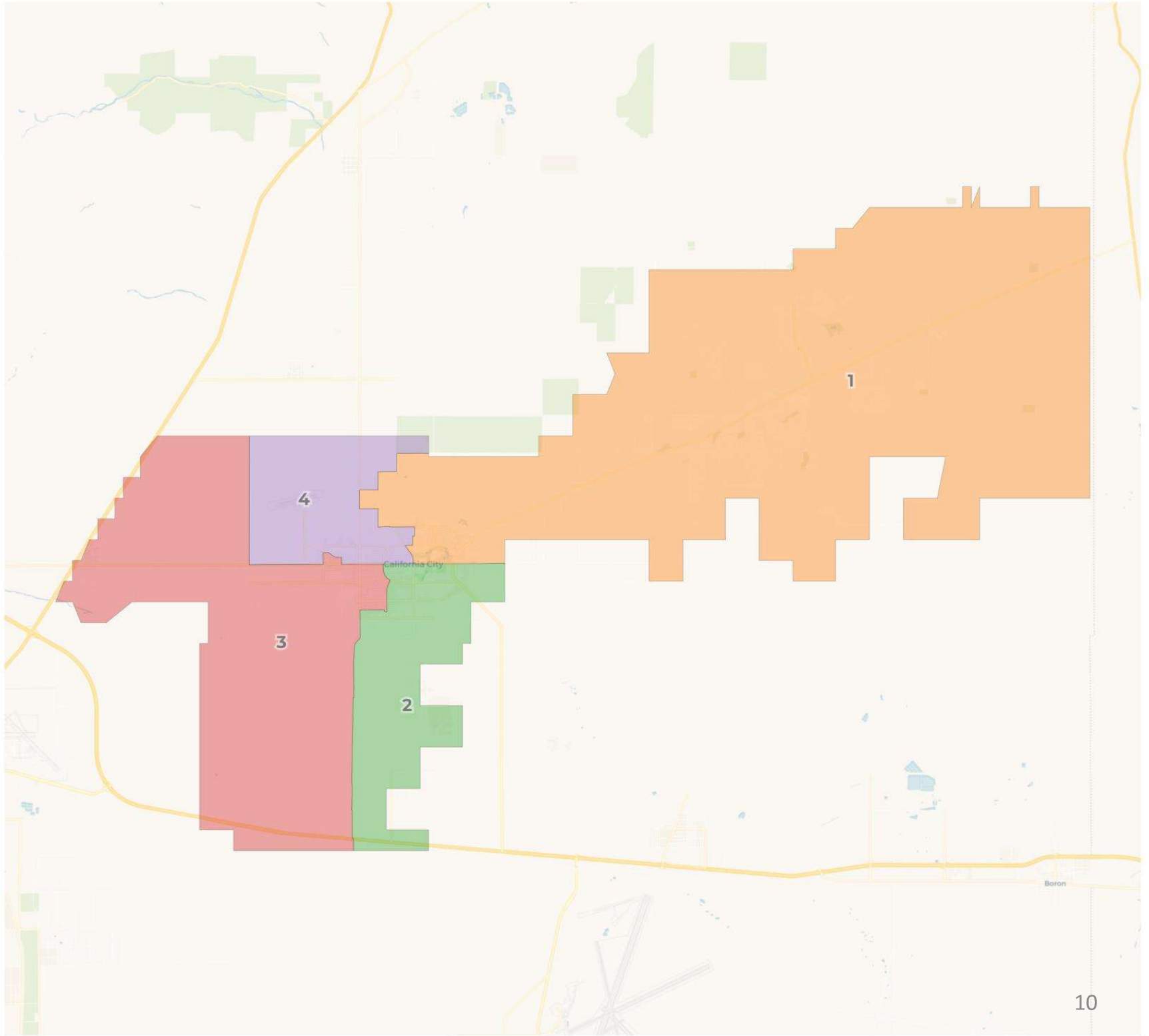
	1	2	3	4
Total CVAP	2,042	2,402	2,221	2,475
Other CVAP	848	1,250	927	1,129
Other CVAP %	41.5%	52.0%	41.7%	45.6%
Latino CVAP	695	613	704	548
Latino CVAP %	34.0%	25.5%	31.7%	22.1%
Asian CVAP	73	19	22	10
Asian CVAP %	3.6%	0.8%	1.0%	0.4%
Black CVAP	426	520	568	788
Black CVAP %	20.9%	21.6%	25.6%	31.8%

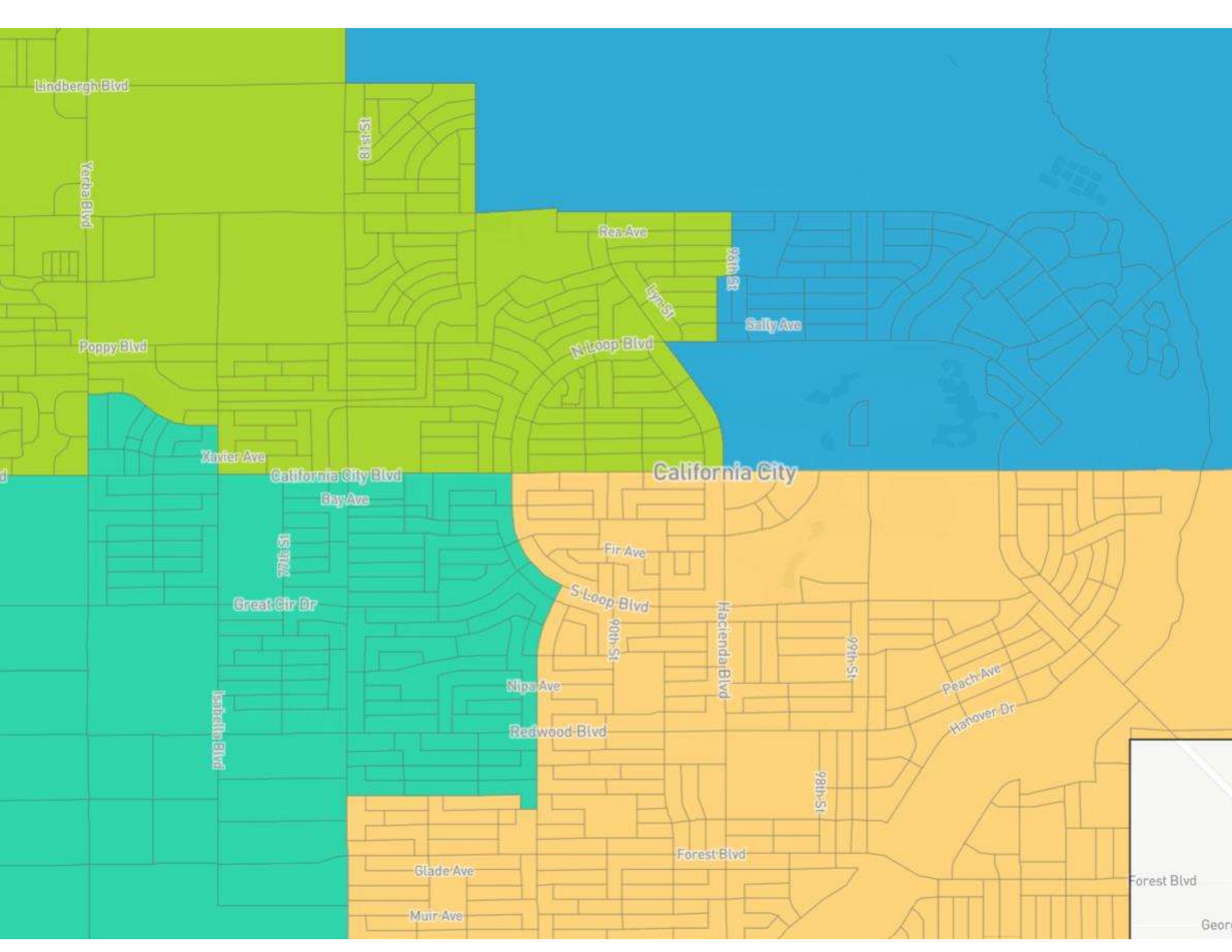


# Draft Maps: Draft A



- Total Population Deviation: 7.7%
- Used public map ID 289096 as a template
  - Used main roads as much as possible and increased compactness





Lindbergh Blvd

Verba Blvd

81st St

Poppy Blvd

Xavier Ave

California City Blvd

Bay Ave

77th St

Great Cir Dr

Isabella Blvd

Glade Ave

Muir Ave

Rea Ave

N Loop Blvd

Lynn St

72th St

Sally Ave

California City

Fir Ave

S Loop Blvd

90th St

Nipa Ave

Redwood Blvd

Forest Blvd

Hacienda Blvd

99th St

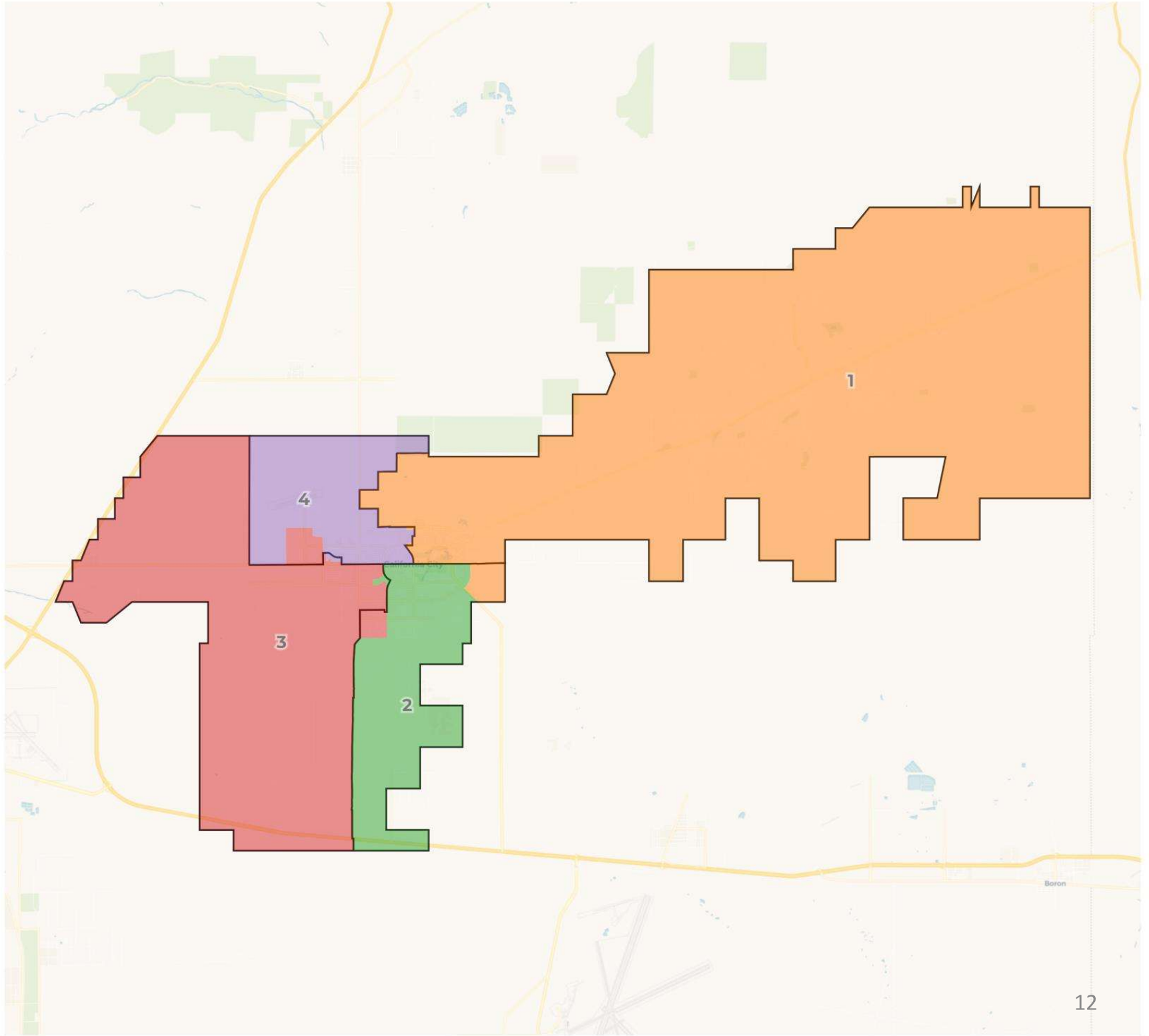
Peach Ave

Hanover Dr

98th St

Forest Blvd

Geor



**2020 Census**

	1	2	3	4
Population	3,149	3,252	3,137	3,385
Deviation	-82	21	-94	154
Deviation %	-2.5%	0.6%	-2.9%	4.8%
Other	1,396	1,466	1,315	1,284
Other %	44.3%		41.9%	37.9%
Latino	952		1,078	1,104
Latino %	30.2%	33.5%	34.4%	32.6%
Asian	82	107	75	85
Asian %	2.6%	3.3%	2.4%	2.5%
Black	719	590	669	912
Black %	22.8%	18.1%	21.3%	26.9%

Total Deviation: 7.7%

**Citizen Voting Age Population (CVAP)**

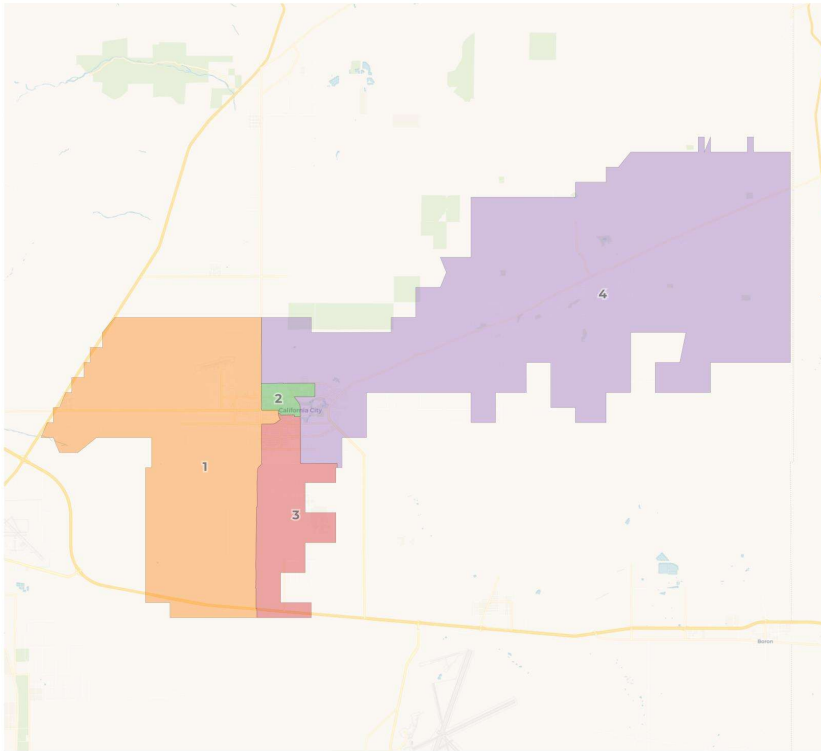
	1	2	3	4
Total CVAP	2,676	2,445	1,723	2,296
Other CVAP	1,079	1,146	844	1,085
Other CVAP %	40.3%	46.9%	49.0%	47.3%
Latino CVAP	627	743	464	726
Latino CVAP %	23.4%	30.4%	26.9%	31.6%
Asian CVAP	3	31	28	62
Asian CVAP %	0.1%	1.3%	1.6%	2.7%
Black CVAP	967	525	387	423
Black CVAP %	36.1%	21.5%	22.5%	18.4%



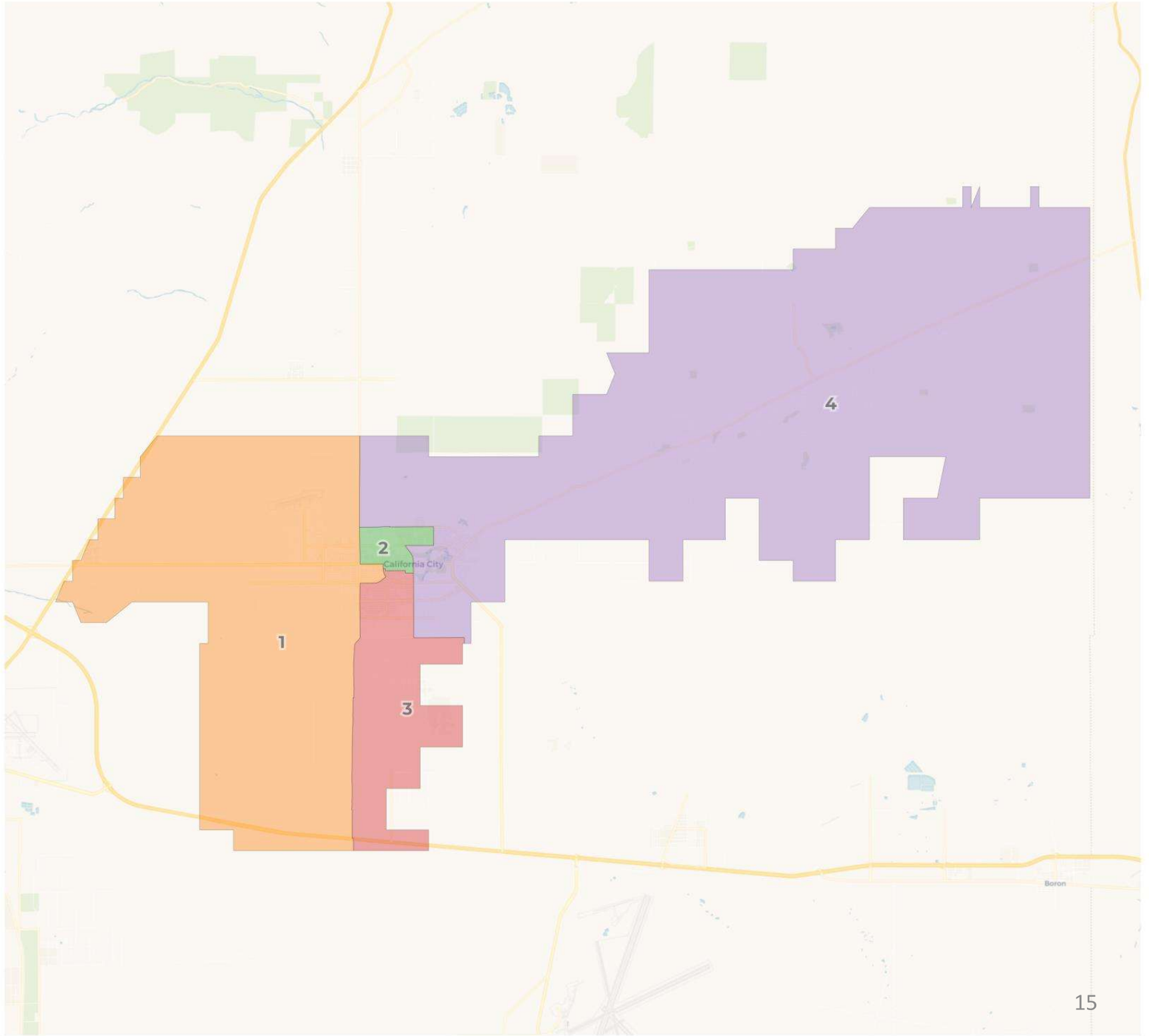
# Draft Maps: Draft B

City of California City  
Draft B (modified ID 289684)

 REDISTRICTING  
PARTNERS

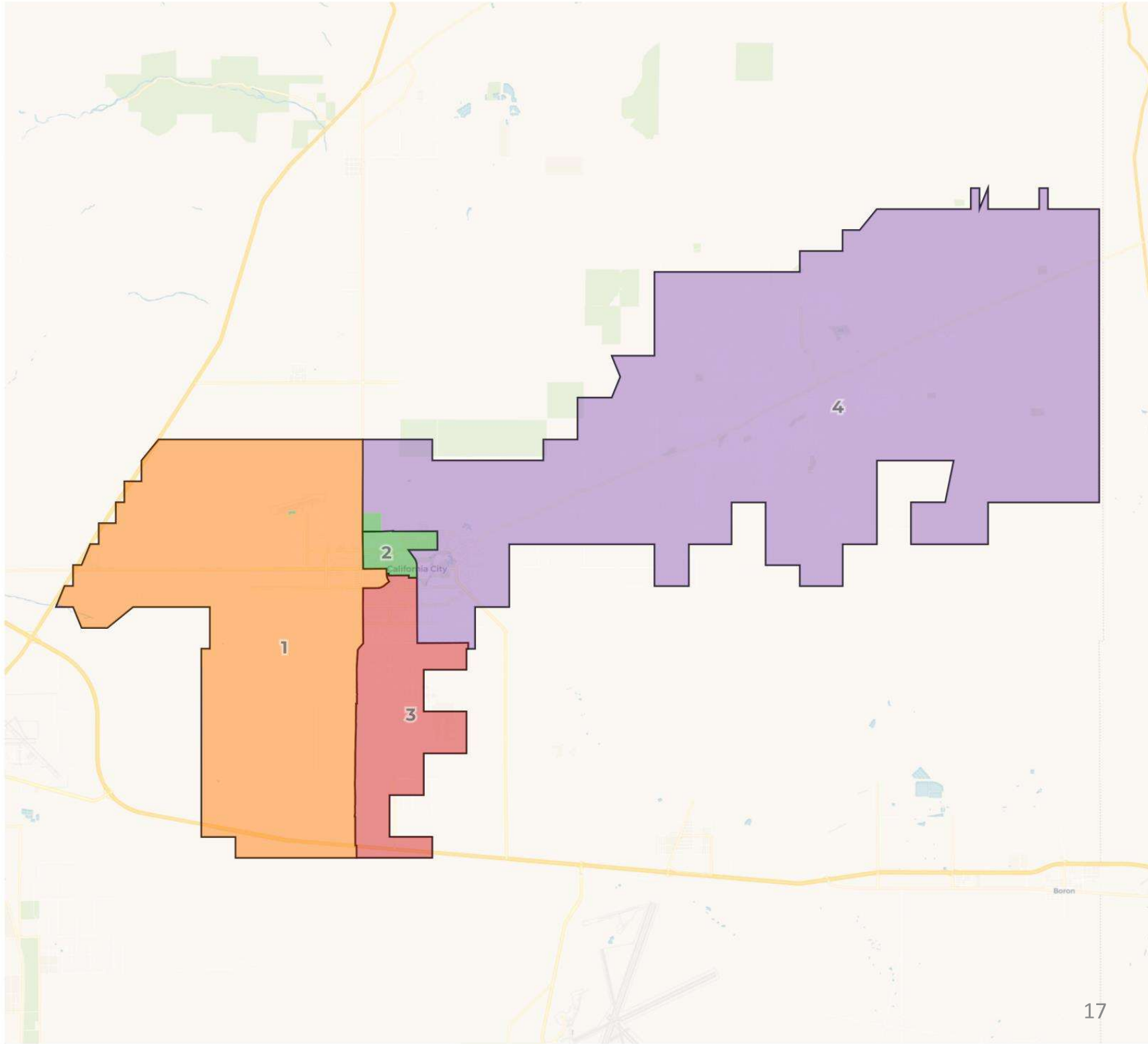


- Total Population Deviation: 6.6%
- Used public map ID 289684 as a template
  - Used main roads as much as possible and fixed contiguity issue in District 1









## 2020 Census

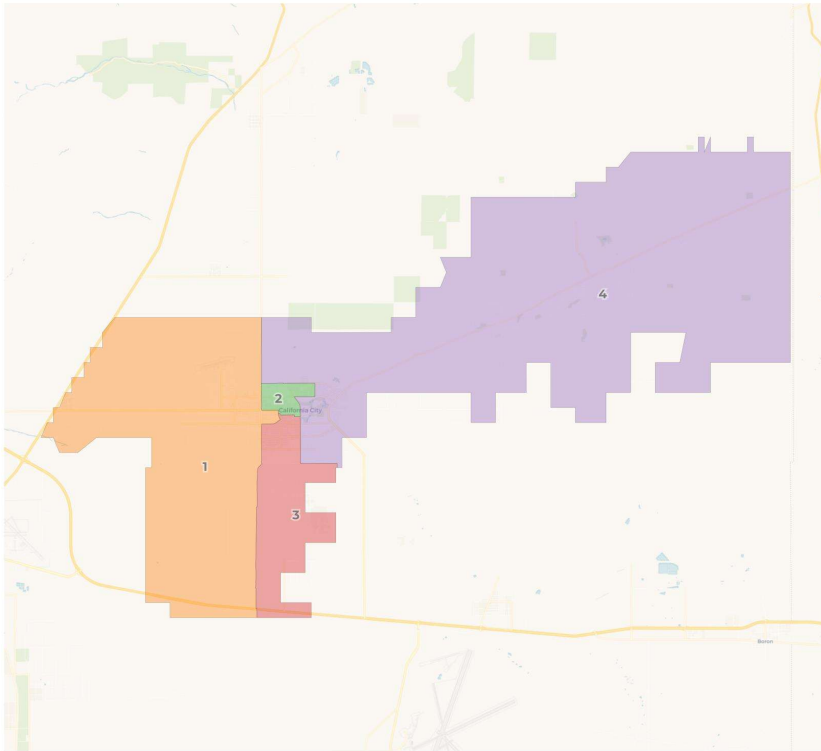
	1	2	3	4
Population	3,174	3,135	3,268	3,346
Deviation	-57	-96	37	115
Deviation %	-1.8%	-3.0%	1.1%	3.6%
Other	1,210	1,287	1,432	1,532
Other %	38.1%		43.8%	45.8%
Latino	1,122	---	1,088	1,094
Latino %	35.3%	29.3%	33.3%	32.7%
Asian	85	97	72	95
Asian %	2.7%	3.1%	2.2%	2.8%
Black	757	832	676	625
Black %	23.9%	26.5%	20.7%	18.7%

Total Deviation: 6.6%

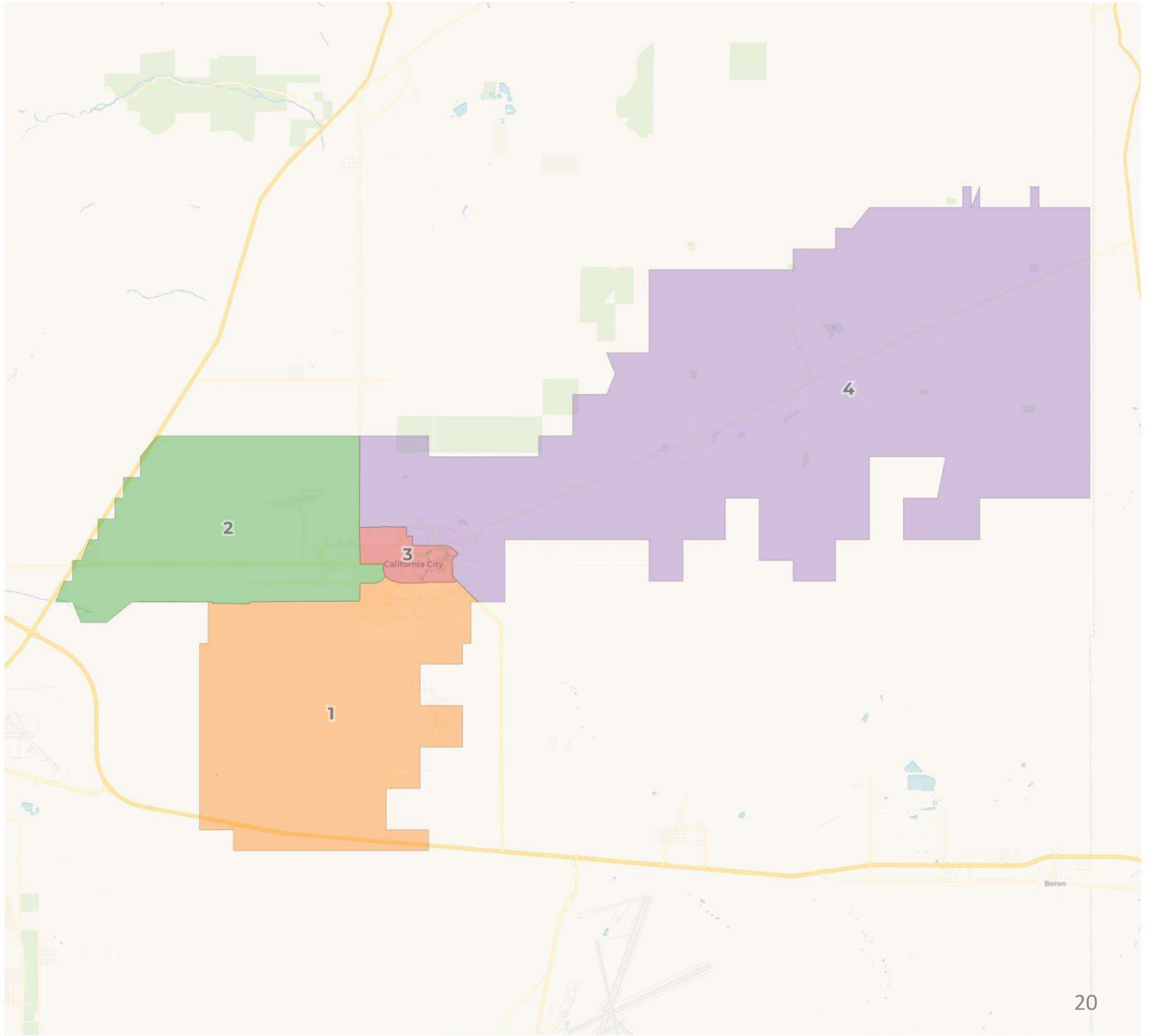
## Citizen Voting Age Population (CVAP)

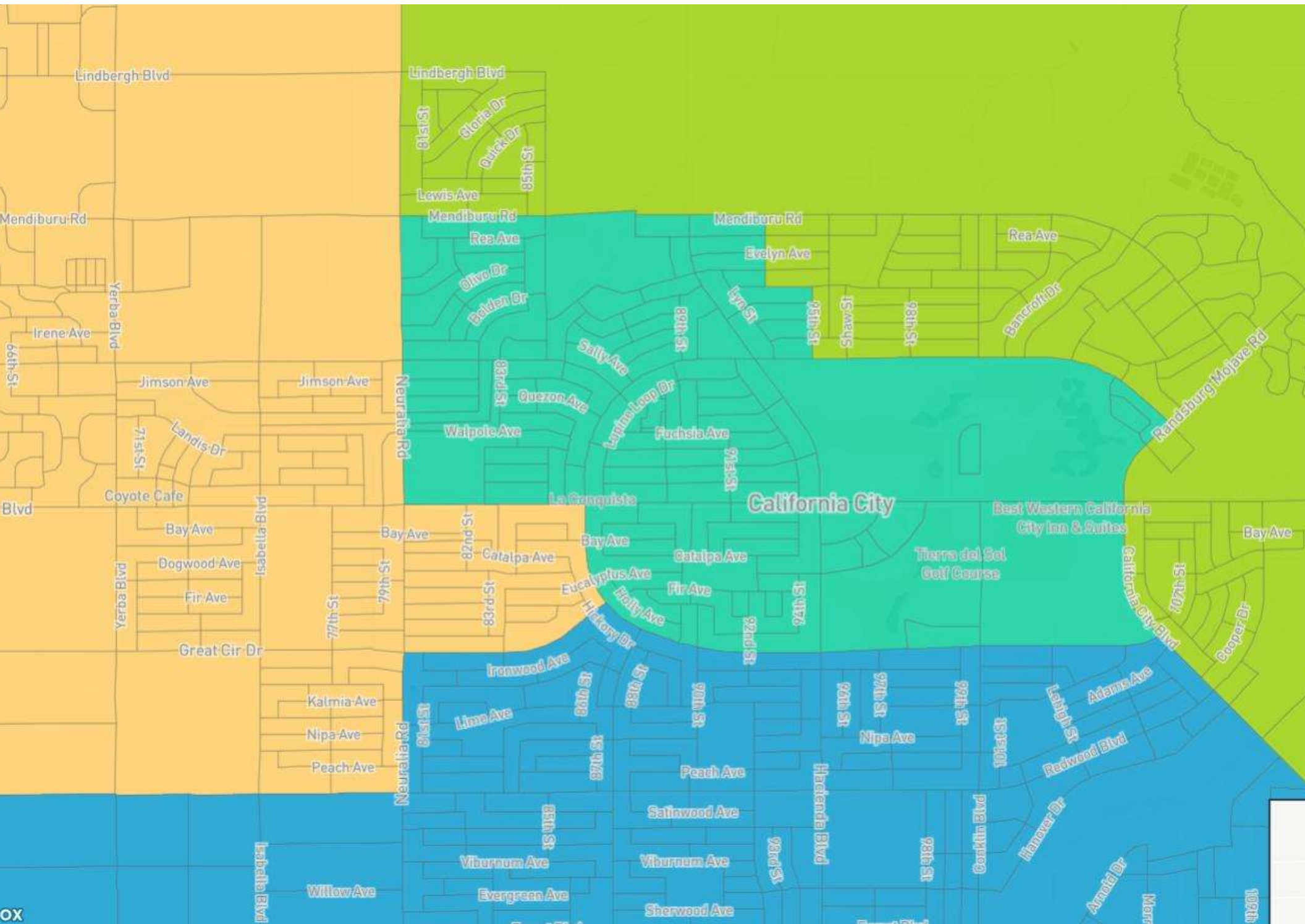
	1	2	3	4
Total CVAP	1,936	2,206	2,135	2,863
Other CVAP	794	1,186	975	1,199
Other CVAP %	41.0%	53.8%	45.7%	41.9%
Latino CVAP	663	552	661	684
Latino CVAP %	34.2%	25.0%	31.0%	23.9%
Asian CVAP	65	38	16	5
Asian CVAP %	3.4%	1.7%	0.7%	0.2%
Black CVAP	414	430	483	975
Black CVAP %	21.4%	19.5%	22.6%	34.1%

# Draft Maps: Draft C



- Total Population Deviation: 7.2%
- Different configuration of the City to provide visual options
  - Uses main roads as much as possible
  - Compact southern, eastern, and western districts along with a central district







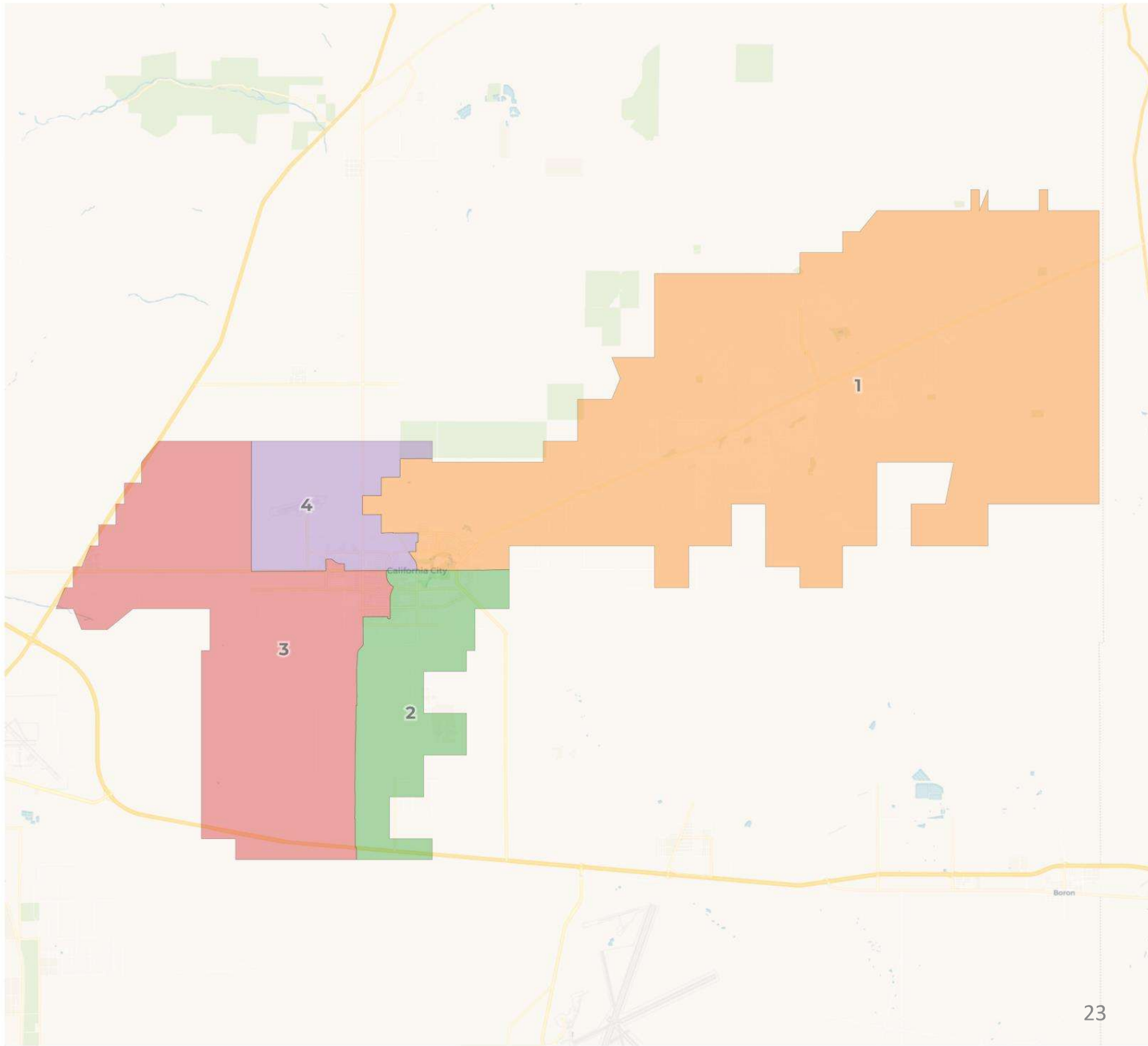
**2020 Census**

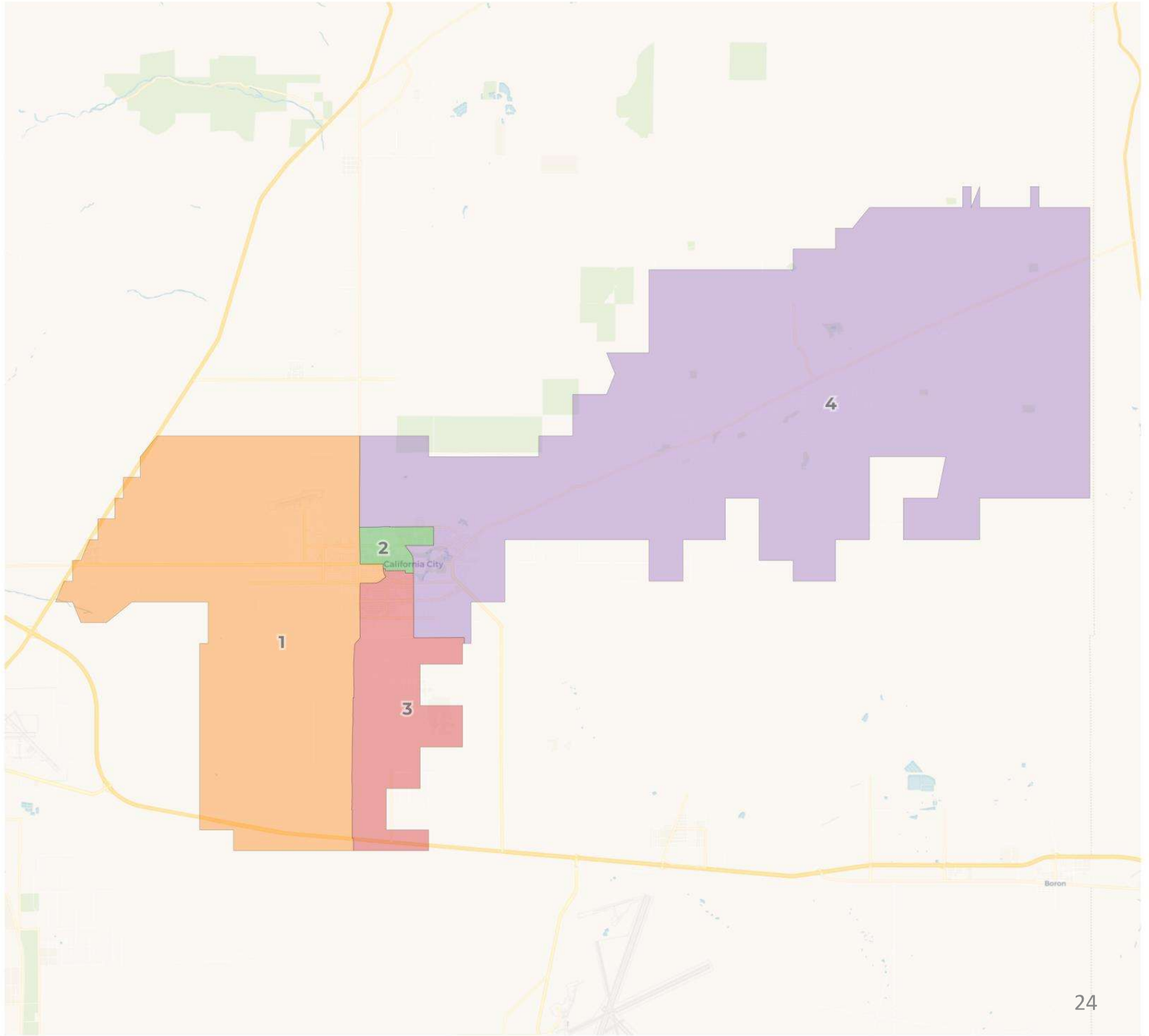
	1	2	3	4
Population	3,373	3,174	3,142	3,234
Deviation	142	-57	-89	3
Deviation %	4.4%	-1.8%	-2.8%	0.1%
Other	1,462	1,210	1,278	1,511
Other %	43.3%		40.7%	46.7%
Latino	1,134		977	990
Latino %	33.6%	35.3%	31.1%	30.6%
Asian	83	85	105	76
Asian %	2.5%	2.7%	3.3%	2.4%
Black	694	757	782	657
Black %	20.6%	23.9%	24.9%	20.3%

Total Deviation: 7.2%

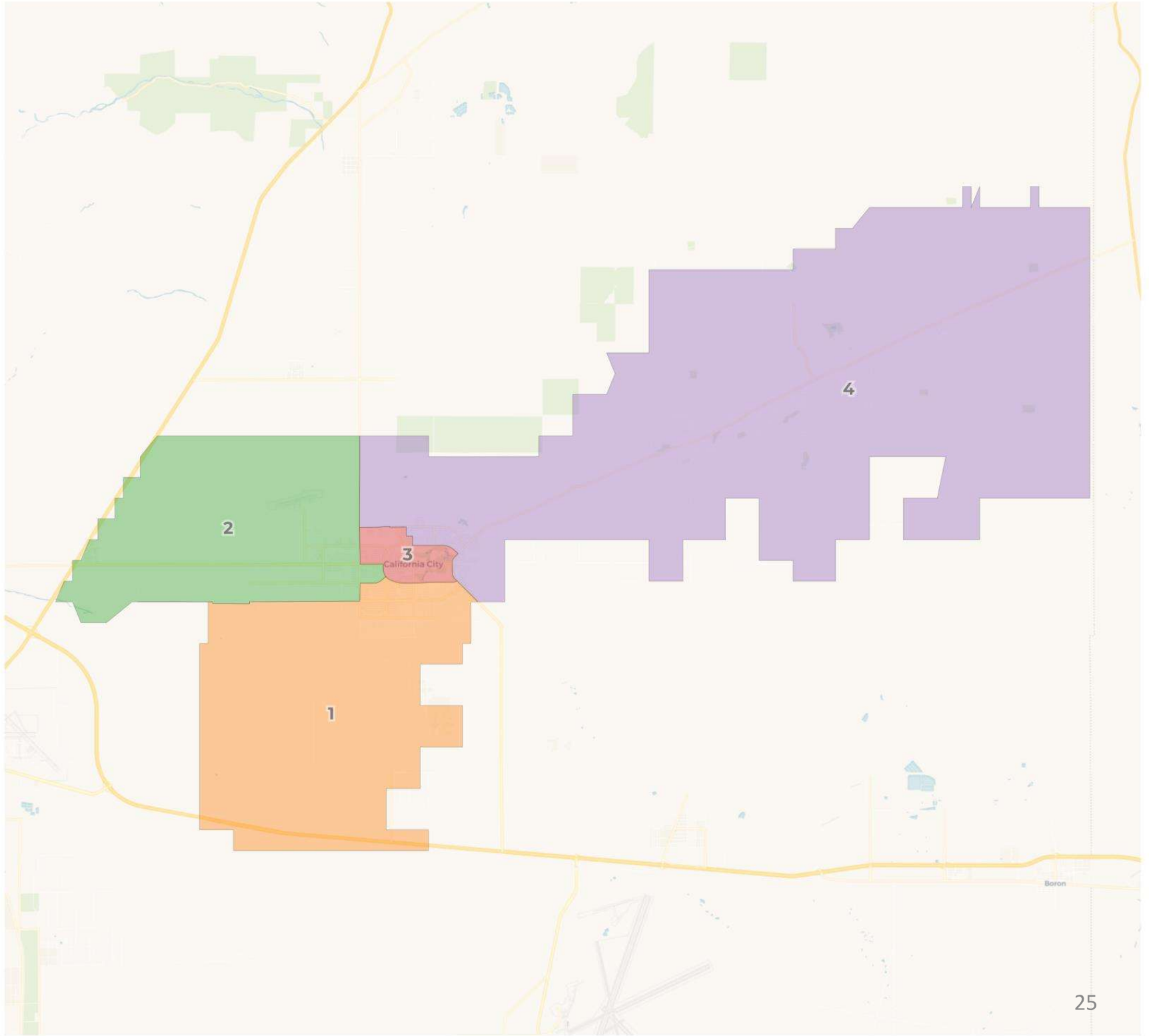
**Citizen Voting Age Population (CVAP)**

	1	2	3	4
Total CVAP	2,185	1,936	2,185	2,834
Other CVAP	995	794	1,158	1,207
Other CVAP %	45.5%	41.0%	53.0%	42.6%
Latino CVAP	677	663	570	650
Latino CVAP %	31.0%	34.2%	26.1%	22.9%
Asian CVAP	10	65	45	4
Asian CVAP %	0.5%	3.4%	2.1%	0.1%
Black CVAP	503	414	412	973
Black CVAP %	23.0%	21.4%	18.9%	34.3%









# City of California City

First two meetings devoted to community of interest information gathering and education on districting process

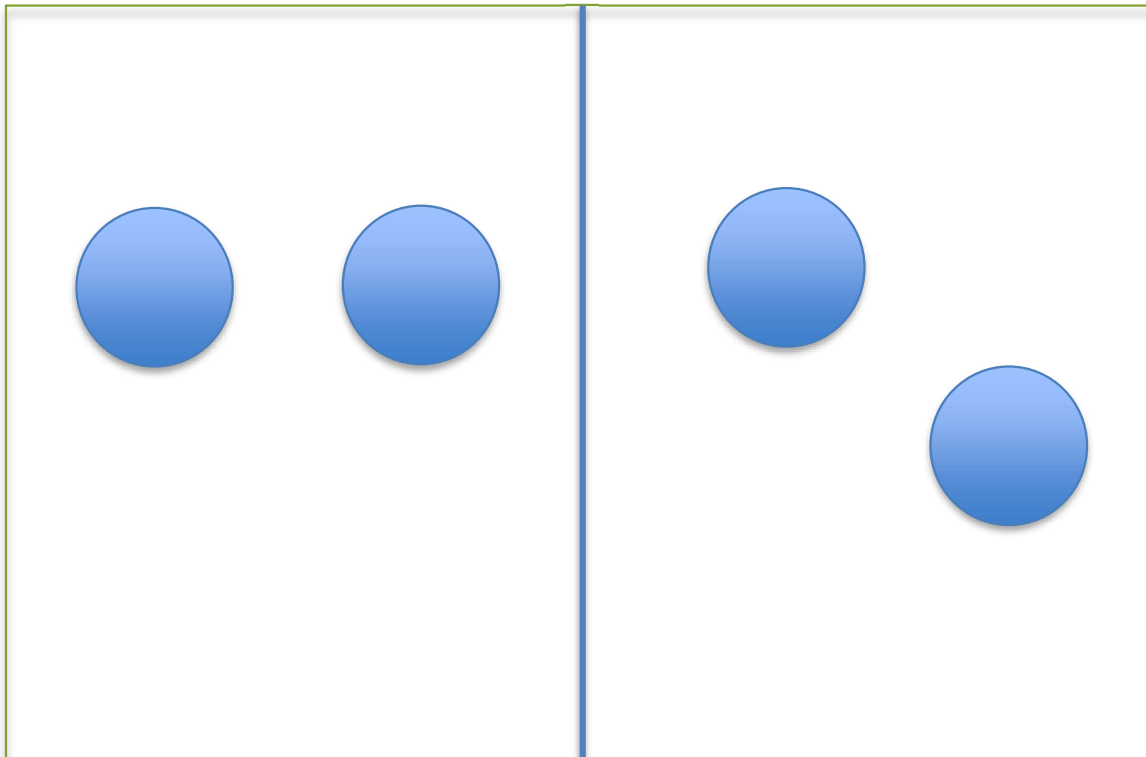
## Proposed Schedule:

February 25, 2025	Public Hearing #1 (Pre-map)
March 11, 2025	Public Hearing #2 (Pre-map)
March 25, 2025	Public Hearing #3 (Post-map)
<b>April 8, 2025</b>	<b>Public Hearing #4 (Post-map)</b>
April 22, 2025	Public Hearing #5: final vote

# Numbering and Sequencing

2026

2028



Currently (at-large):

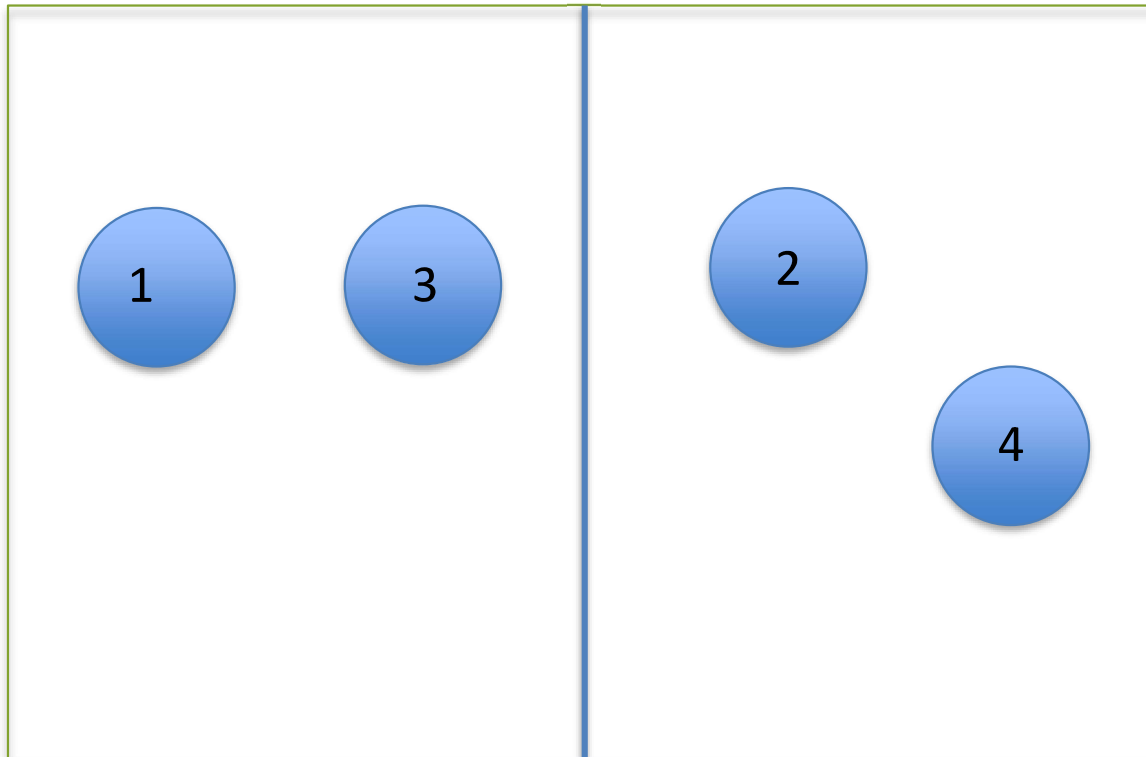
- Staggered elections
  - 3 districts up in 2026
  - 2 districts up in 2028

Sequencing determines when each council district is up for election, and then residents will vote in those districts every four years thereafter.

# Numbering and Sequencing

2026

2028



Districted Elections:

- Odd-numbered districts in 2026
- Even-numbered districts in 2028

City Council can renumber the final map and base sequencing on numerous factors:

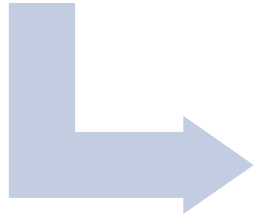
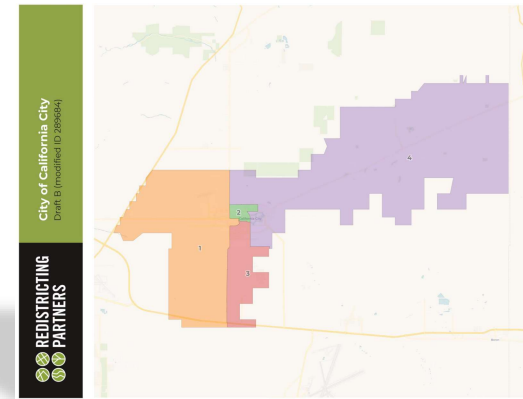
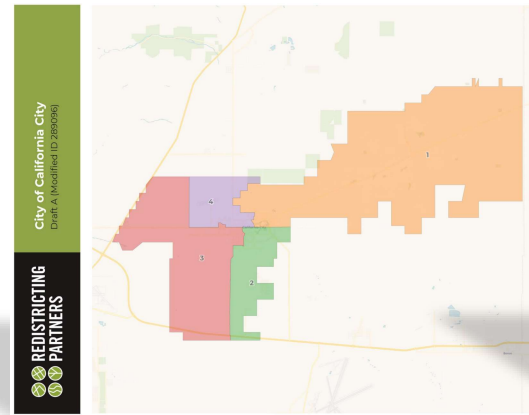
- Public input
- Natural election cycles
- Areas historically underrepresented on the council

# What's Next

The City Council can make use of these mapping options in a number of ways.

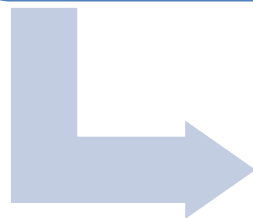
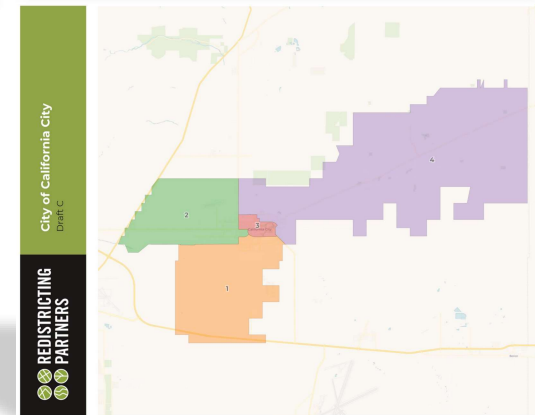
Identify preferred plan(s)

- Select a map to bring forward to the next meeting for adoption



Sequencing

- Select a final sequence

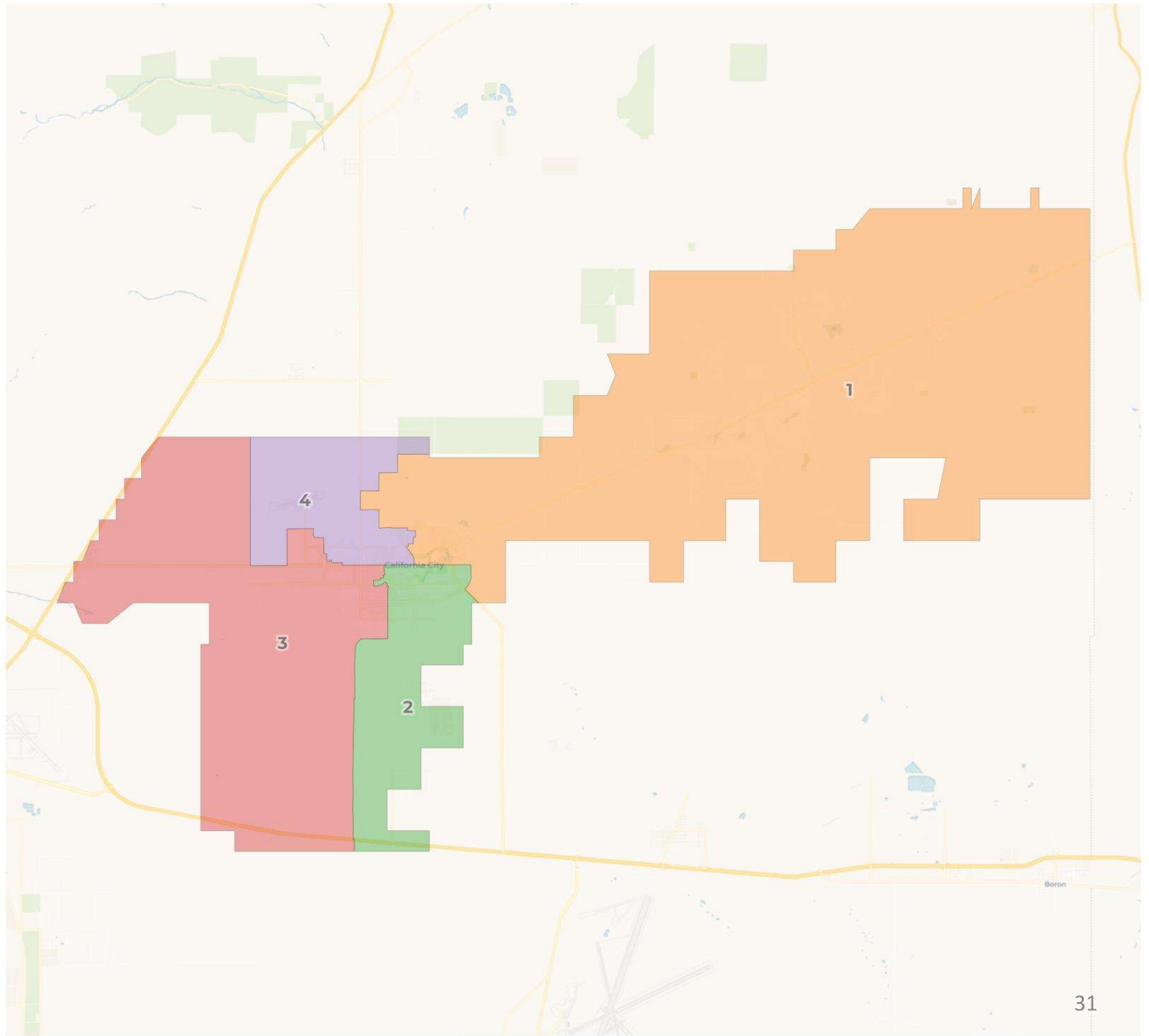


Map moves forward

- Demographers and staff will bring back the final map with sequencing for the April 22<sup>nd</sup> meeting



**REDISTRICTING  
PARTNERS**



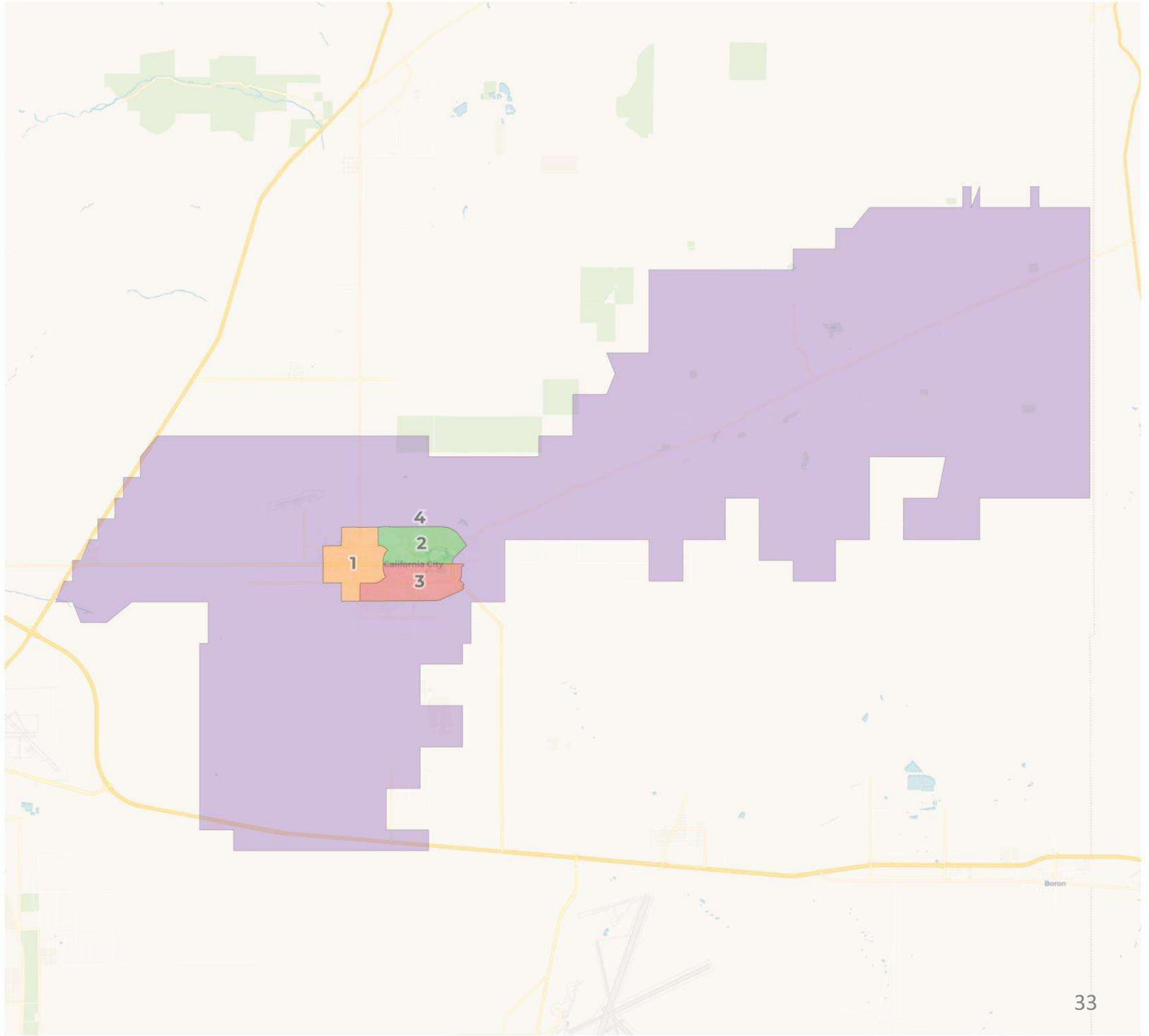
**2020 Census**

	1	2	3	4
Population	3,229	3,221	3,237	3,236
Deviation	-2	-10	6	5
Deviation %	-0.1%	-0.3%	0.2%	0.2%
Other	1,426	1,434	1,382	1,219
Other %	44.2%	Total Deviation: 0.5%		37.7%
Latino	987	1,094	1,082	1,060
Latino %	30.6%	34.0%	33.4%	32.8%
Asian	83	106	76	84
Asian %	2.6%	3.3%	2.3%	2.6%
Black	733	587	697	873
Black %	22.7%	18.2%	21.5%	27.0%

**Citizen Voting Age Population (CVAP)**

	1	2	3	4
Total CVAP	2,739	2,422	1,793	2,186
Other CVAP	1,107	1,107	910	1,030
Other CVAP %	40.4%	45.7%	50.8%	47.1%
Latino CVAP	649	741	472	698
Latino CVAP %	23.7%	30.6%	26.3%	31.9%
Asian CVAP	3	30	29	62
Asian CVAP %	0.1%	1.2%	1.6%	2.8%
Black CVAP	980	544	382	396
Black CVAP %	35.8%	22.5%	21.3%	18.1%



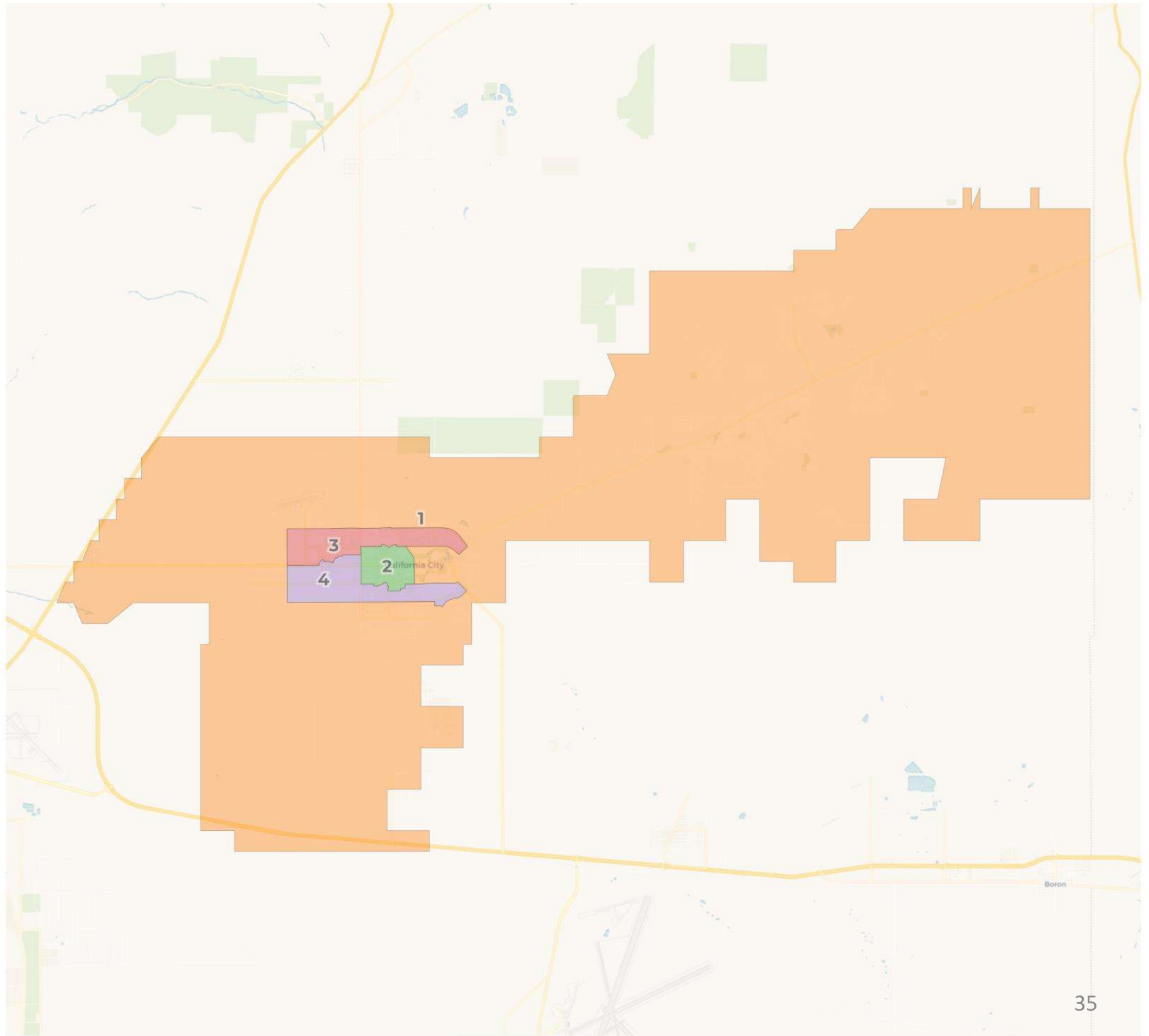


**2020 Census**

	1	2	3	4
Population	3,297	3,319	3,189	3,118
Deviation	66	88	-42	-113
Deviation %	2.0%	2.7%	-1.3%	-3.5%
Other	1,201	1,480	1,408	1,372
Other %	36.4%	Total Deviation: 6.2%		44.0%
Latino	1,147	948	1,037	1,091
Latino %	34.8%	28.6%	32.5%	35.0%
Asian	81	104	93	71
Asian %	2.5%	3.1%	2.9%	2.3%
Black	868	787	651	584
Black %	26.3%	23.7%	20.4%	18.7%

**Citizen Voting Age Population (CVAP)**

	1	2	3	4
Total CVAP	2,023	2,402	2,355	2,360
Other CVAP	877	1,250	977	1,050
Other CVAP %	43.4%	52.0%	41.5%	44.5%
Latino CVAP	655	613	707	585
Latino CVAP %	32.4%	25.5%	30.0%	24.8%
Asian CVAP	51	19	22	32
Asian CVAP %	2.5%	0.8%	0.9%	1.4%
Black CVAP	440	520	649	693
Black CVAP %	21.7%	21.6%	27.6%	29.4%

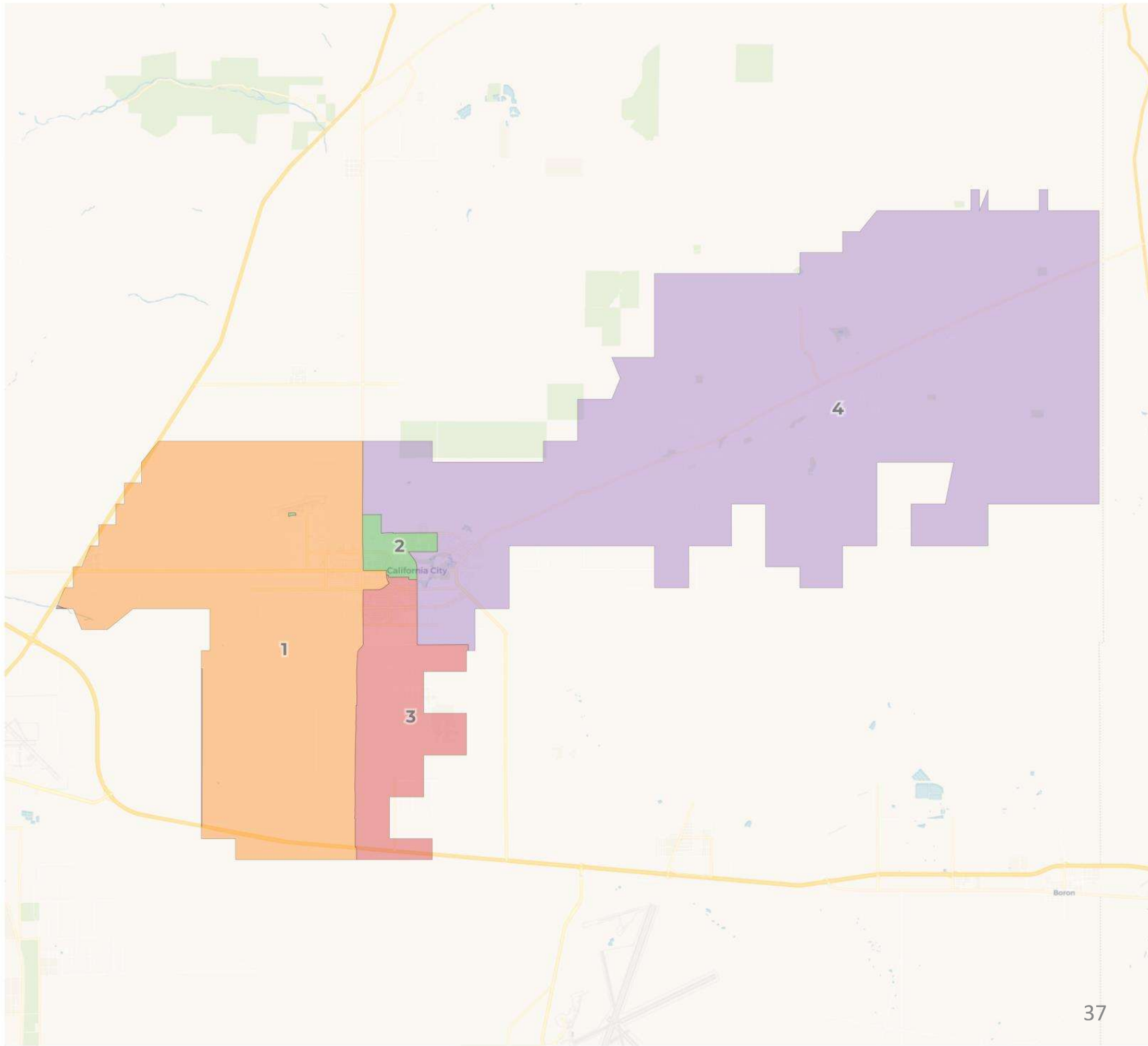


**2020 Census**

	1	2	3	4
Population	3,407	3,237	3,147	3,132
Deviation	176	6	-84	-99
Deviation %	5.4%	0.2%	-2.6%	-3.1%
Other	1,516	1,297	1,381	1,267
Other %	44.5%	<b>Total Deviation: 8.5%</b>		40.5%
Latino	1,133	1,068	1,016	1,006
Latino %	33.3%	33.0%	32.3%	32.1%
Asian	81	105	91	72
Asian %	2.4%	3.2%	2.9%	2.3%
Black	677	767	659	787
Black %	19.9%	23.7%	20.9%	25.1%

**Citizen Voting Age Population (CVAP)**

	1	2	3	4
Total CVAP	2,679	2,110	2,241	2,110
Other CVAP	1,169	1,075	1,089	821
Other CVAP %	43.6%	50.9%	48.6%	38.9%
Latino CVAP	608	574	697	681
Latino CVAP %	22.7%	27.2%	31.1%	32.3%
Asian CVAP	11	41	42	30
Asian CVAP %	0.4%	1.9%	1.9%	1.4%
Black CVAP	891	420	413	578
Black CVAP %	33.3%	19.9%	18.4%	27.4%



**2020 Census**

	1	2	3	4
Population	3,174	3,135	3,268	3,346
Deviation	-57	-96	37	115
Deviation %	-1.8%	-3.0%	11%	3.6%
Other	1,210	1,287	1,432	1,532
Other %	38.1%	41.1%	43.8%	45.8%
Latino	1,122	919	1,088	1,094
Latino %	35.3%	29.3%	33.3%	32.7%
Asian	85	97	72	95
Asian %	2.7%	3.1%	2.2%	2.8%
Black	757	832	676	625
Black %	23.9%	26.5%	20.7%	18.7%

Total Deviation: 6.6%

**Citizen Voting Age Population (CVAP)**

	1	2	3	4
Total CVAP	1,936	2,206	2,135	2,863
Other CVAP	794	1,186	975	1,199
Other CVAP %	41.0%	53.8%	45.7%	41.9%
Latino CVAP	663	552	661	684
Latino CVAP %	34.2%	25.0%	31.0%	23.9%
Asian CVAP	65	38	16	5
Asian CVAP %	3.4%	1.7%	0.7%	0.2%
Black CVAP	414	430	483	975
Black CVAP %	21.4%	19.5%	22.6%	34.1%